



ENTEGRAL  
COACH®

When top-of-the-line  
is your starting point.



CORNERSTONE





After 40 years of building Jayco, the world's largest privately-owned RV manufacturer, our family is proud to stand behind every Entegra Coach we build with the Bontrager Family Promise. It's a promise to provide unfailing customer service—before, during and after the sale. To learn more, visit us online or see your local Entegra Coach dealership.

*Derald L. Bontrager* *Wilbur L. Bontrager*

DERALD & WILBUR BONTRAGER  
Entegra Coach Founders



# Beautifully Powerful.

**THE 2011 CORNERSTONE** is the benchmark for luxury. Its impeccable allure can't be emulated. Its unbridled power can't be rivaled.

Illustrious touches, like solid granite countertops, Amish-crafted hardwoods and custom-laid porcelain tile floors, elevate the Cornerstone to a class of its own where only it—and you—belong.

And with a Cummins 500 HP engine, exclusivity takes on a whole new meaning, putting you in a power bracket of your own design. With Cornerstone, you rule the road—not the other way around.

2011 ENTEGRA COACH

CORNERSTONE®

Cornerstone brandishes timeless style and unrivaled allure with natural leather furniture, a choice of Washington Glazed Maple or Mocha Glazed Maple hardwood cabinetry, a 40-inch LCD HDTV with theatre surround sound and an electric fireplace.

EXPANSIVE LIVING







## SPACIOUS

You'll be infatuated with Cornerstone's King Select Comfort air mattress and classic bedspread with pillow shams, while its cedar-lined, mirrored wardrobe closet has ample room for all your garmets.



## SOPHISTICATED

Two vessel sinks, sprawling solid granite countertops and heated porcelain flooring create unsurpassable elegance, while Cornerstone's radius shower with beautiful hand-laid porcelain tile and convenient integrated seat give you the luxury you need to unwind.



Cornerstone's kitchen is a Class A paragon with its 1-inch residential-grade granite countertops, a solid porcelain tile backsplash, high-rise satin nickel dual-lever faucet and Amish handcrafted cabinetry. Stainless-steel Jenn-Air appliances, including a convection microwave and 22 cu. ft. double-door refrigerator, add to Cornerstone's luxurious feel.

## REFINED CRAFTSMANSHIP



## LUXURY AND FUNCTION

(A) You're always in control thanks to the Multiplex lighting panel, which gives you all-shade control and puts the living area, porch and security lighting right at your fingertips. (B) L.E.D. recessed lighting throughout gives the Cornerstone a warm ambiance. (C) Forget you're in a motor coach with the Fisher/Paykel dishwashing drawer.





#### CONVENIENCE AND RIGIDITY

Carpeted and lighted electric slideout cargo trays provide plenty of storage, while the X-Bridge system keeps Cornerstone from flexing, increasing the construction's overall integrity.



#### SEAMLESS

The sleek design of the flush-mount slideout is only a small reflection of Cornerstone's well-assembled, seamless design.



#### ENTERTAINING

Regale your guests with Cornerstone's exterior entertainment system, featuring a 32" LCD HDTV, DVD player and outdoor speakers.



You'll conquer and command every open road in sheer comfort thanks to Cornerstone's six-way power driver and passenger seats with integrated seat belts, adjustable foot pedals, navigation system and SmartWheel multiplexed steering wheel. An Ultra-Vision one-piece wrap-around windshield ensures a clear view of the journey ahead.

#### DRIVING COMFORT



#### ENGINEERING AND STYLE

(A) A convenient slideout tray gives you easy access to the 12,500-watt Onan diesel generator, (B) while a steel reinforced front cap and windshield frame provide extra strength, delivering added protection when driving. (C) Save money and energy with the Manabloc water distribution system, which delivers hot water up to four times faster.



CORNERSTONE

# Unwavering beauty in a bold design.

From its sleek design to its meticulous full-body paint package, every detail elevates the Cornerstone to the peak of perfection. And thanks to a 15,000-pound towing capacity, you can take the fun with you while driving the most luxurious Class A on the road.







# Construction

Cornerstone is built to last with Aluma-Tru Superstructure construction on 16" centers, one-piece molded fiberglass roof and Polar Pack insulation package.

## STRENGTH

A structure's foundation should never be compromised, which is why Cornerstone is built on a Spartan K2 tag axle chassis and Entegra Coach's exclusive X-Bridge frame. Ingeniously crafted with strength in mind, Cornerstone's fully integrated design provides superior support and stabilization, plus easy steering and smooth braking for a comfortable, exceptionally safe ride.

## POWER

Boasting a Cummins ISM turbocharged 500 horsepower engine with Allison 4000 MH six-speed transmission and electronic shifter, Cornerstone has power to spare, while its muffled Jake brake system provides quieter, more efficient braking.

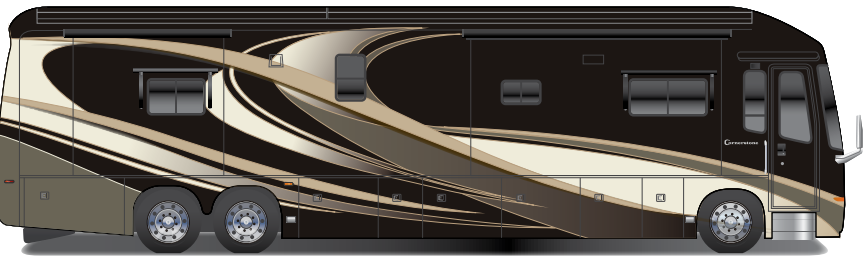


500 ISM

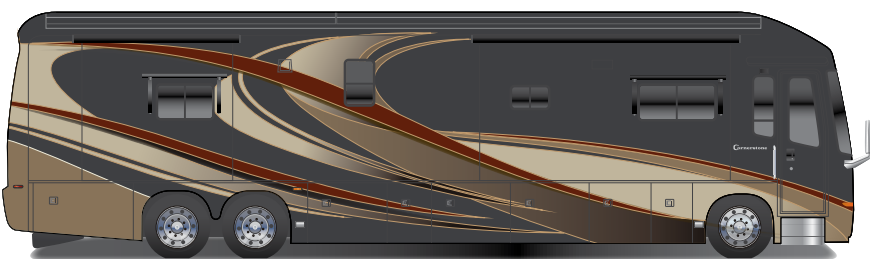
- |   |  |  |
|---|--|--|
| 1. Ultra-Vision one-piece, wrap-around windshield       | 11. Rear-molded fiberglass cap with high mounted integrated air intake | 21. Front molded fiberglass cap  |
| 2. X-Bridge frames engineered into chassis              | 12. Porcelain tile with 4" granite inlays throughout                   | 22. Welded crowned aluminum truss rafters 16" on center                  |
| 3. Aluma-Tru Superstructure construction on 16" centers | 13. Steel tubular floor joists   | 23. Roof fiberglass and Flexfoil insulation (R-24)                       |
| 4. Daytime running lights                               | 14. Wood truss floor risers  | 24. 3/8" plywood roof decking  |
| 5. Premium full-body paint package                      | 15. Floor and underbelly fiberglass and Flexfoil insulation (R-33)     | 25. Seamless fiberglass roof   |
| 6. Extra large basement storage                         | 16. 5/8" plywood floor decking   | 26. (3) 15,000-BTU low-profile roof A/Cs with heat pumps and drain tubes |
| 7. Side-hinged baggage doors                            | 17. 1/2" foam insulation laminated to sidewall                         | 27. Vinyl padded ceiling   |
| 8. Power slideout cargo trays (2)                       | 18. Reflective Flexfoil insulation on all 6 sides                      | 28. Entry door with Sur-Seal air lock                                    |
| 9. Frameless tinted dual-pane safety-glass windows      | 19. Sidewall fiberglass and Flexfoil insulation (R-20)                 | 29. Onan 12,500-watt diesel generator on air-powered sliding tray        |
| 10. Flush-mounted slideout rooms                        | 20. Smooth gel-coat fiberglass sidewalls                               |  |



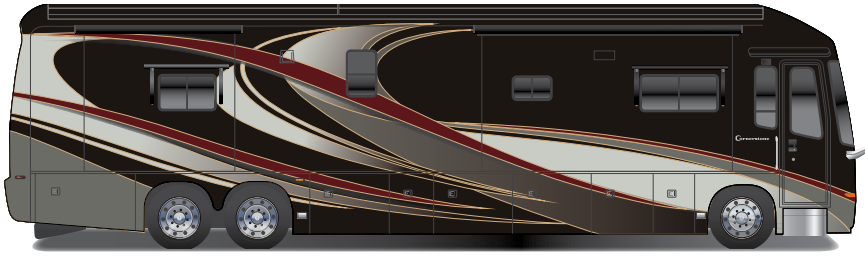
EXTERIOR GRAPHIC OPTIONS



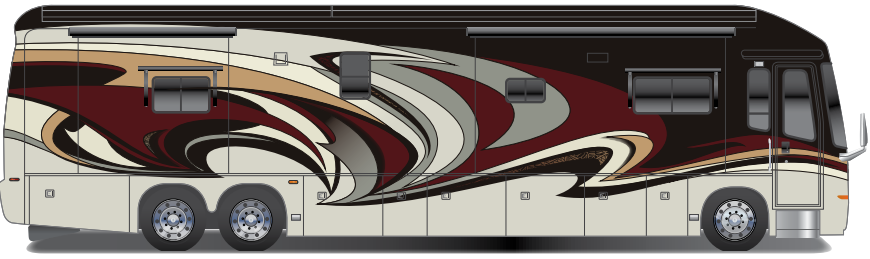
WHITE DIAMOND PEARL



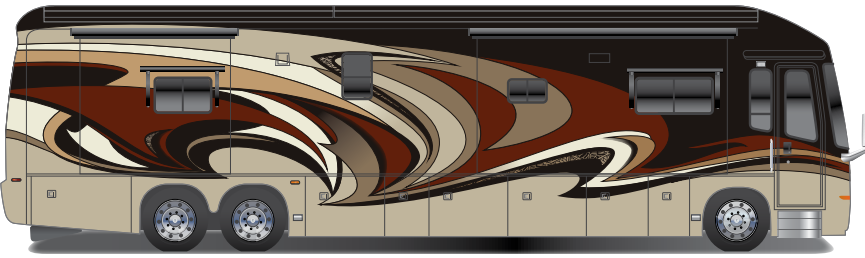
GOLDEN SPLENDOR



MOLTEN METAL



OPULENCE BLACK CHERRY



OPULENCE GOLDEN SPLENDOR

FABRIC OPTIONS



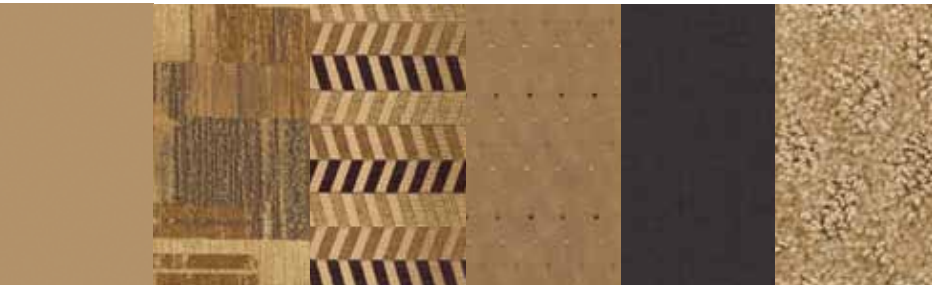
CAVIAR



CHAMPAGNE



MANHATTAN



CASHMERE

WOOD



WASHINGTON GLAZED MAPLE



MOCHA GLAZED MAPLE



CARAMEL GLAZED MAPLE\*

\*Standard bathroom wood for 45DLQ and 45RBQ

THOUGHTFUL DETAIL

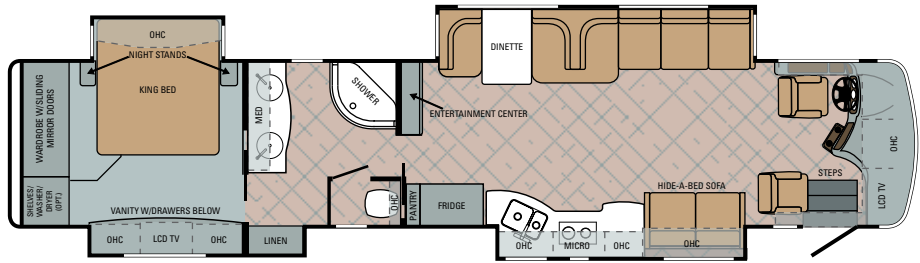
We use only the highest quality solid hardwoods (shown here in Mocha Glazed Maple), carefully hand-hewn by Amish craftsmen. From interior doors to slideout fascia, from cabinetry and drawers to crown molding and sconces, all are fashioned by craftsmen who have an eye for beauty and elegance.



FLOORPLANS      WARD = wardrobe      MICRO = microwave      FRIDGE = refrigerator  
LAV = bathroom sink      OHC = overhead cabinets      MED = medicine cabinet

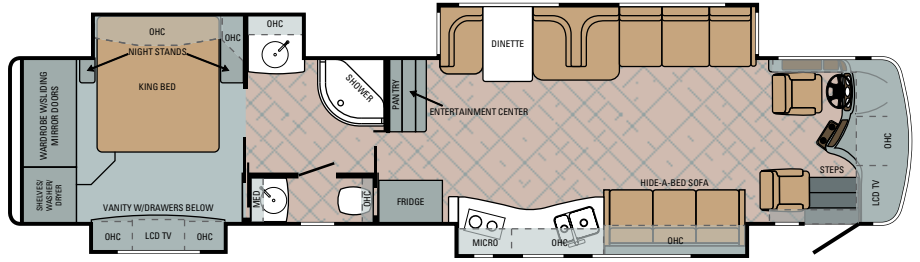
CORNERSTONE | 45DLQ

Ext. Length: 45' 1"   Ext. Height: 12' 11"



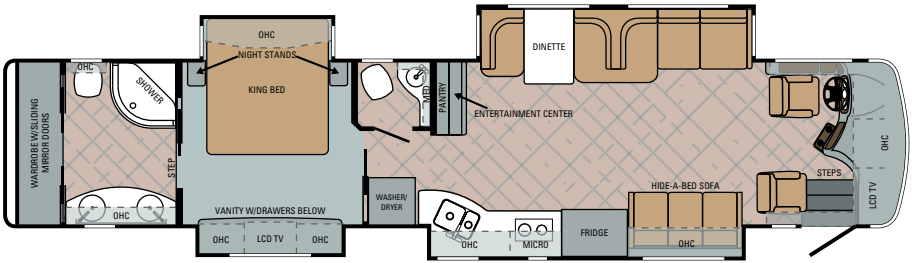
CORNERSTONE | 45SL

Ext. Length: 45' 1"   Ext. Height: 12' 11"



CORNERSTONE | 45RBQ

Ext. Length: 45' 1"   Ext. Height: 12' 11"



SPECIFICATIONS

FLOORPLAN	GVWR (LBS.)	GCWR (LBS.)	FRONT GAWR (LBS.)	REAR GAWR (LBS.)	TAG AXLE GAWR (LBS.)	WHEEL BASE	OVERALL LENGTH	OVERALL HEIGHT WITH AIR & SATELLITE	EXTERIOR WIDTH	INTERIOR HEADROOM	FRESH WATER CAPACITY (GALS.)	GREY WASTE WATER CAPACITY (GALS.)	BLACK WASTE WATER CAPACITY (GALS.)
45DLQ	46,600	61,600	16,600	20,000	10,000	320"	45' 1"	12' 11"	101"	84"	100	60	60
45RBQ	46,600	61,600	16,600	20,000	10,000	320"	45' 1"	12' 11"	101"	84"	100	60	60
45SL	46,600	61,600	16,600	20,000	10,000	320"	45' 1"	12' 11"	101"	84"	100	60	60

STANDARDS AND OPTIONS

STANDARD BATHROOM EQUIPMENT

2-panel residential-style solid hardwood passage doors  
16"x 16" porcelain tile floor with 4" granite inlays  
120V G.F.C.I. protected receptacle  
Bathroom power vent  
Overhead cabinet above stool  
Porcelain tile shower with integrated seat  
Residential medicine cabinet with mirror  
Satin nickel fixtures  
Skylight in shower  
Solid granite residential-grade countertops  
Thetford Aria porcelain stool with push-button flush  
Toilet paper holder  
Towel holder and ring  
Vanity light fixture  
Vessel sink(s)  
Window in commode area

STANDARD BEDROOM EQUIPMENT

32" LCD HDTV  
All-in-one home theater remote  
Ceiling mirror feature  
Decorative headboard  
Halogen satin nickel reading lights  
Home theater system, Dolby Digital 5.1 Surround Sound with DVD  
In-bed remote secure coach locking system  
King Select Comfort air mattress  
Large cedar-lined wardrobe  
Quilted bedspread with 2 pillow shams

STANDARD KITCHEN EQUIPMENT

16" x 16" porcelain tile floor in kitchen with 4" granite inlays  
120V G.F.C.I. protected receptacle  
Fisher/Paykel dishwasher drawer  
High-rise satin nickel dual-lever faucet  
Jenn-Air 1.6-cu. ft. convection microwave oven with carousel  
Jenn-Air 22 cu. ft. 2-door residential refrigerator with in-door ice and water dispenser  
Jenn-Air flush-mounted, electric 2-burner touch control range  
Mini blind  
Porcelain tile backsplash with granite inlays  
Silverware drawer, divided for utensils  
Solid granite residential-grade countertops with undermounted stainless-steel sink  
Solid granite sink covers/cutting boards (4)  
Under-sink, sink cover storage compartment

DRIVER COMPARTMENT AMENITIES

12V auxiliary in-dash receptacle (2)  
16" x 16" porcelain tile in driver compartment with 4" granite inlays  
26" digital LCD HDTV  
A/C/heater vents by foot pedals  
Adjustable foot pedal  
Auxiliary start switch  
Battery boost switch  
CB radio with antenna  
Chassis battery disconnect  
Color back-up camera and monitor  
Color-coordinated carpeted floormats  
Cruise control (SmartWheel controlled)  
Fog lights  
High-output dash heater and A/C  
In-dash compass and exterior temperature gauge  
Intermittent windshield wipers, single motor (SmartWheel controlled)

Natural leather power adjustable driver and passenger seats with integrated 3-point, lap and shoulder safety belts  
Powered roller side sun visors and privacy shades  
Powered stepwell cover with pinch resistance technology  
Push button shift control  
Side cameras with turn signals  
Spartan Message Center with LCD display featuring: odometer, tachometer, instantaneous fuel economy, fuel remaining, outside air temp., coolant temp., engine oil temp. and pressure, transmission temp., turbo boost pressure, air pressure, diagnostic functions, fault codes, service reminders, percentage of engine load, trip meter, speed and voltage  
Storage compartment(s) beside passenger seat  
Tilt and telescoping steering  
Touch control for hydraulic automatic leveling jack system  
Touch-screen AM/FM/CD/DVD with GPS navigation and Bluetooth  
Trip-Tek Information Center  
Ultra-Vision one-piece wrap-around tinted windshield  
VIP SmartWheel steering integrated controls for systems  
VIP soft-touch, wood-grain, leather-wrapped steering wheel

STANDARD CHASSIS EQUIPMENT

2 chassis batteries  
4.33:1 "Quiet-Gear" rear axle ratio  
55-degree turning radius  
150-gal. fuel tank (dual fill)  
200-amp alternator  
15,000-lb. hitch with 7-pin plug  
Allison GEN 4 4000 MH 6-speed shift pad electronic transmission  
All-wheel ABS brakes  
Automatic heated moisture ejectors  
Automatic Traction Control (ATC)  
Bilstein shocks (front/rear)  
Cummins ISM turbocharged 500 HP engine 1,550 lb. ft. torque at 1,200 RPM  
Daytime running lights  
Engine block heater  
Full-air front disc and rear drum brakes  
Hadley Air Leveling "Smart Air" management system  
Hendrickson HTB rear air suspension  
Hidden safe  
Meritor rear axle 20,000-lbs., tag axle 10,000-lbs.  
Michelin 315/80R 22.5" radial tires  
Polished aluminum wheels  
Pre-wired for supplemental braking system  
Raised rail for maximum storage  
Remote air fill with air hose  
Side-mounted radiator  
Spartan K2 tag axle chassis  
Tag axle auto weight release  
Tuthill IFS 16,600 front axle wide track  
Tuthill IFS independent front air suspension  
Two-stage Jake brake system

STANDARD CONSTRUCTION FEATURES

5/8" plywood main floor decking  
2-3/4" welded tubular-aluminum sidewall construction  
2" x 4" floor trusses  
3M front protective film mask  
4-1/2" arched aluminum truss roof (R-24)  
Aluma-Tru Superstructure construction on 16" centers  
Cabinetry crafted with screwed hardwood stile construction  
Deluxe hidden cabinet hinges  
Electric-powered slideouts  
Enclosed, insulated and heated floor and underbelly (R- 33)

Frameless flush-mounted slideout rooms  
Fully decked roof with 3/8" plywood  
One-piece fiberglass roof  
Polar Pack insulation with reflective Flexfoil floor (R-33), roof (R-24), sidewalls (R-16)  
Reli-torq slideout system  
Sidewalls bolted to frame  
Smooth gel-coat fiberglass exterior walls  
Steel-reinforced front cap and windshield frame  
X-Bridge frames engineered into chassis

STANDARD EXTERIOR EQUIPMENT

120V G.F.C.I.-protected exterior receptacle  
Aerodynamic front cap  
Carefree armored power entrance door awning  
Carefree armored slideout awnings  
CB antenna  
Chrome, heated, remote control, side-view mirrors  
Docking lights  
Door for dump valve access  
Driving lamps  
Electric-powered, double entrance step  
Entry door with Sur-Seal air lock  
Exterior 32" LCD HDTV with CD/DVD player and speakers  
Frameless tinted dual-pane safety-glass windows  
Full-body premium paint package  
Full-width rear mudflap  
Girard roof-integrated, armored, and powered roof awning  
Hadley air horns  
Hydraulic automatic leveling jacks (dual positive)  
Keyless entry key fob and keypad system  
Lighted heavy-duty grab handle  
One-piece pass-through storage compartments  
Patio light with inside switch  
Power bay door locks integrated with key fob and touch pad  
Power slideout cargo trays (2)  
Rear-molded fiberglass cap with integrated rear intake  
Roof ladder  
Security lights (2)  
Side-hinged baggage doors  
Sliding battery tray (2 positions)  
Uni-Dock exterior utility center, heated and enclosed with second system monitor panel  
Xenon high visibilty headlights

STANDARD INTERIOR EQUIPMENT

2-panel residential-style solid hardwood passage doors throughout  
16" x 16" heated porcelain tile floor with 4" granite inlays  
40" LCD HDTV in living area  
Aire-Secure travel locks for all passage doors  
All-in-one home theater remote  
Ball bearing drawer guides 75-lb. capacity with full-drawer extension  
Cable TV hookup with RG6 coax  
Ceiling mirror feature  
Central vacuum system  
Crank-up HDTV antenna with signal booster  
Decorative pillows for comfort lounge and hide-a-bed  
Decorative satin nickel lighting throughout  
Decorative trim package  
Electric fireplace  
Fabric and wood-covered box valances with lambrequin legs  
Hardwood cabinets  
Hardwood fascia boards  
Home theater system, Dolby Digital 5.1 Surround Sound with DVD

L.E.D. recessed lighting package  
Lights at entrance steps  
Multiplex lighting  
Natural leather booth dinette/comfort lounge sofa ensemble  
Natural leather hide-a-bed sofa  
Padded vinyl ceiling throughout  
Phone jack  
Power day/night roller shades throughout  
Residential-style trim and molding  
Solid hardwood cabinetry and miter-cornered raised-panel doors throughout  
Stackable washer and dryer  
Winegard in-motion roof-mounted satellite dome (HD-ready)

HEAT, POWER AND WATER EQUIPMENT

5-watt solar panel (for chassis batteries)  
12V demand water pump  
12V electrical system  
50-amp electric service  
50-amp quick-connect power cord with electric reel  
2,800-watt inverter with 8-6V batteries (2)  
15,000-BTU low profile central A/Cs (3) with heat pump, digital thermostat, Chillgrille and drain tubes  
Aqua-Hot 450-D water and heating system with in-floor radiant heating throughout  
Black holding tank sprayer  
Conveniently placed water pump switches  
Dual insulated ceiling air ducts with adjustable air vents  
Holding and fresh water tanks, radiant-heated  
Hookup for city water  
Manabloc water system  
Onan 12,500-watt diesel generator with auto-changeover on sliding tray  
Onan auto generator and temperature start system  
Outside shower  
Power auto rewind water hose  
Surge suppressor  
Systems monitor panel  
Water heater bypass system  
Water purifier with faucet and ice maker  
Winterizing kit

STANDARD SAFETY EQUIPMENT

Carbon monoxide alarm  
Deadbolt lock on entrance door  
Egress window  
Fire extinguisher  
Hidden safe  
Lap safety belts in living area  
Propane alarm  
Security system  
Smoke alarm  
Third brake light  
Tire pressure monitor system

OPTIONS

60-watt solar panels (2)  
Black porcelain toilet (2 in 45RBQ)  
Exterior freezer in slideout tray  
Free-standing table with 4 chairs and sofa  
Glass mat batteries  
Waste Master sewer connection



## 2-YEAR WARRANTY (5-YEAR STRUCTURAL)

Our family is proud to stand behind every Entegra Coach we build. That's why we back our motor coaches with a manufacturer's limited warranty, warranted to the original purchaser for two years (five years structural) from the original date of purchase or 24,000 miles of use, whichever comes first, against defects in materials and workmanship. Our commitment is to provide you with the highest level of products and services possible. We invite you to compare us with other manufacturers—we think you'll find that our passion for your satisfaction is unmatched. For a copy of the limited warranty with full terms and conditions, ask your local Entegra Coach dealer.

## 3-YEAR PLATINUM-LEVEL ROADSIDE ASSISTANCE

Travel worry-free in your Cornerstone motor coach with the Entegra Coach Customer First Roadside Assistance program, yours at no cost during your first three years of ownership. This program is offered through Coach-Net, the largest RV emergency road service in the country and gives you immediate access to dependable roadside assistance and support services with a simple phone call.

- Free jump starts
- Free tire changes
- Free fuel delivery
- Free lockout service
- Free travelers checks
- Toll-free nationwide service appointment assistance
- 24-hour toll-free emergency message service
- Free custom trip routing and full-color map service
- Free dispatch of on-site mechanical service
- \$2,000 trip-interruption reimbursement
- RV technical assistance hotline
- Free towing to nearest qualified service

YOUR ENTEGRA COACH DEALER



**GROSS VEHICLE WEIGHT RATING (GVWR):** The maximum permissible weight of the motor coach, including the Unloaded Vehicle Weight (UVW) plus passengers, personal items, all cargo, fluids, options and dealer-installed accessories. The GVWR is equal to or greater than the sum of the UVW and the Cargo Carrying Capacity.

**GROSS AXLE WEIGHT RATING (GAWR):** The maximum allowable weight each axle assembly is designed to carry, as measured at the tires, therefore including the weight of the axle assembly itself.

**GROSS COMBINED WEIGHT RATING (GCWR):** The maximum allowable combined weight of the motor coach used as a tow vehicle and the attached towed vehicle.

It is important for your safety and enjoyment that you are aware of the weights and tow ratings of the RV you select. Consult a competent advisor for questions or advice. Whether you are new to RVing or a veteran, get a feel for the performance of your RV before heading out on the roadways. When you tow a vehicle with your RV, you must drive differently than when you drive a single vehicle. Practice hooking up, driving, backing up and braking in a safe environment or seek out professional instruction. Entegra Coach affixes a weight label to each RV which lists weight information for that vehicle. Refer to that label to verify the vehicle will meet your requirements. See specifications chart inside.

See dealer for further information and prices. All information in this brochure is the latest available at the time of publication approval. Entegra Coach reserves the right to make changes and to discontinue models without notice or obligation. Photos in this brochure may show optional equipment and props for photography purposes. RVs built for sale in Canada may differ to conform to Canadian codes. ©2010 Entegra Coach, Inc. 11-CSTN-PL0910-10K Printed in U.S.A.

Entegra Coach, Inc., P.O. Box 460, Middlebury, IN 46540 | [www.entegracoach.com](http://www.entegracoach.com)



**ENTEGR A**  
COACH®

A reputation for integrity isn't built overnight. It happens only after years of doing what you say you will do—and by practicing the Golden Rule.

Over the last 40 years, the Bontrager family has worked hard to establish a reputation of integrity in the RV business. Through ups and downs, successes and failures, these four decades have taught us the importance of doing our best to meet our customers' expectations. And that is why we are excited to introduce the finest line of RVs we have ever built—the motor coaches from Entegra Coach.

We believe Entegra Coach captures everything we stand for, from its structural quality and old-world craftsmanship, to unmatched customer service. We hope you'll take some time with your local dealer to understand why our family stands so strongly behind Entegra Coach.

*Without compromise.*