



**E N T E G R A**

---

**C O A C H <sup>®</sup>**

**Entegra Service  
School**

# Samsung Televisions

## Models by Size

**32" Television:** UN32EH4000

**40" Television:** UN40EH5000

**46" Television:** UN46EH5000

## Inputs and Outputs on Rear of TV

- Shared Component/Composite Input
  - 3.5mm Audio Out
  - Digital Audio Out
- Antenna/Cable Input

## Inputs on Side of TV

- HDMI 1 Input
- HDMI 2 Input
- USB Input





# Samsung Home Theaters

## Models by Location

Bedroom: HTE550

Living Room: HTE4500

### Rear View of HTE550

- Speaker Outputs
  - FRONT
  - CENTER
  - SURROUND
  - SUBWOOFER
- Composite Video Out
  - Aux In 2
- Digital Audio Input
- FM Antenna Input
- HDMI Out



### Rear View of HTE4500

- Speaker Outputs
- Composite Video Out
  - Aux In 2
- Digital Audio Input
- FM Antenna Input
- HDMI Out
- Wireless LAN Input



# HDMI Distribution

- HDMI Input
- Power Input



- HDMI Outputs





# MEXDV1700U

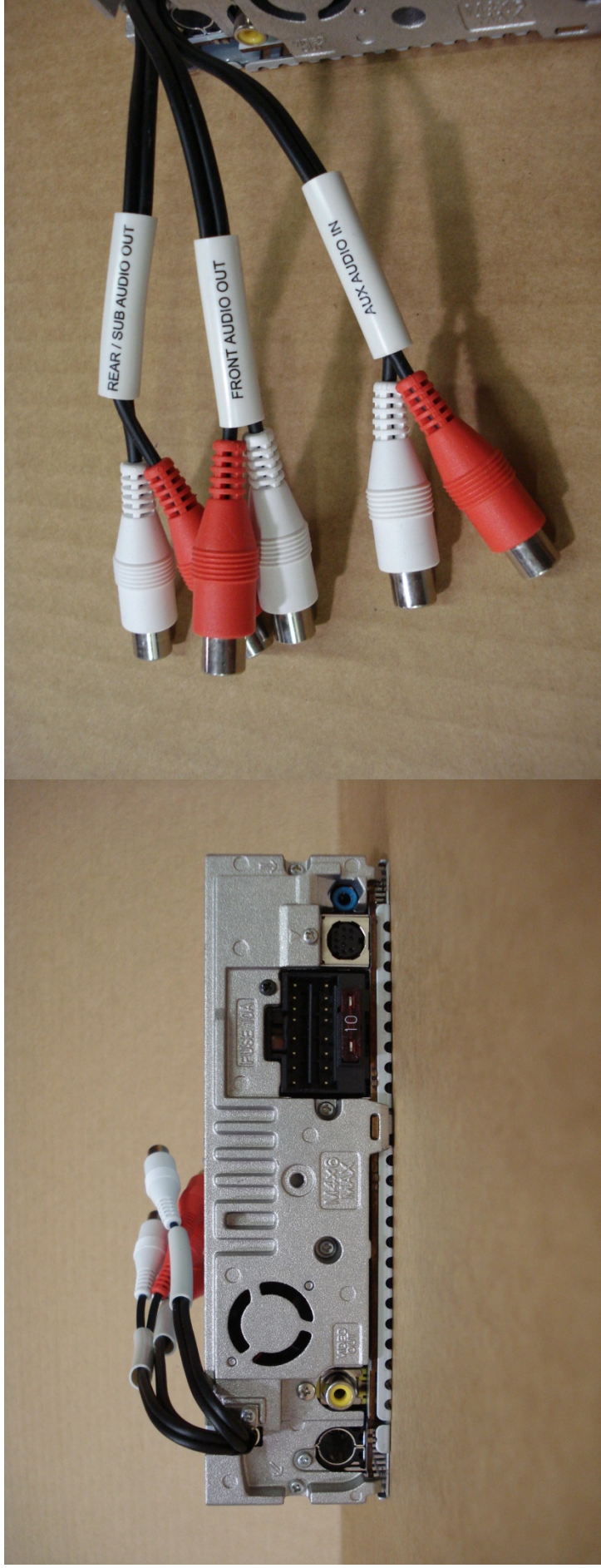
## (Exterior Entertainment Center)

### Rear View of MEXDV1700U

- Tuner Input (Used)
- Composite Video Output (Used)
- Power/Speaker Harness Plug (Used)
  - Sirius Tuner Input (Optional)
- External Remote 3.5mm Input (Not Used)

### Rear RCA Inputs/Outputs

- Rear/Sub Audio Out (Not Used)
- Front Audio Out (Not Used)
- Aux Audio In (Used)



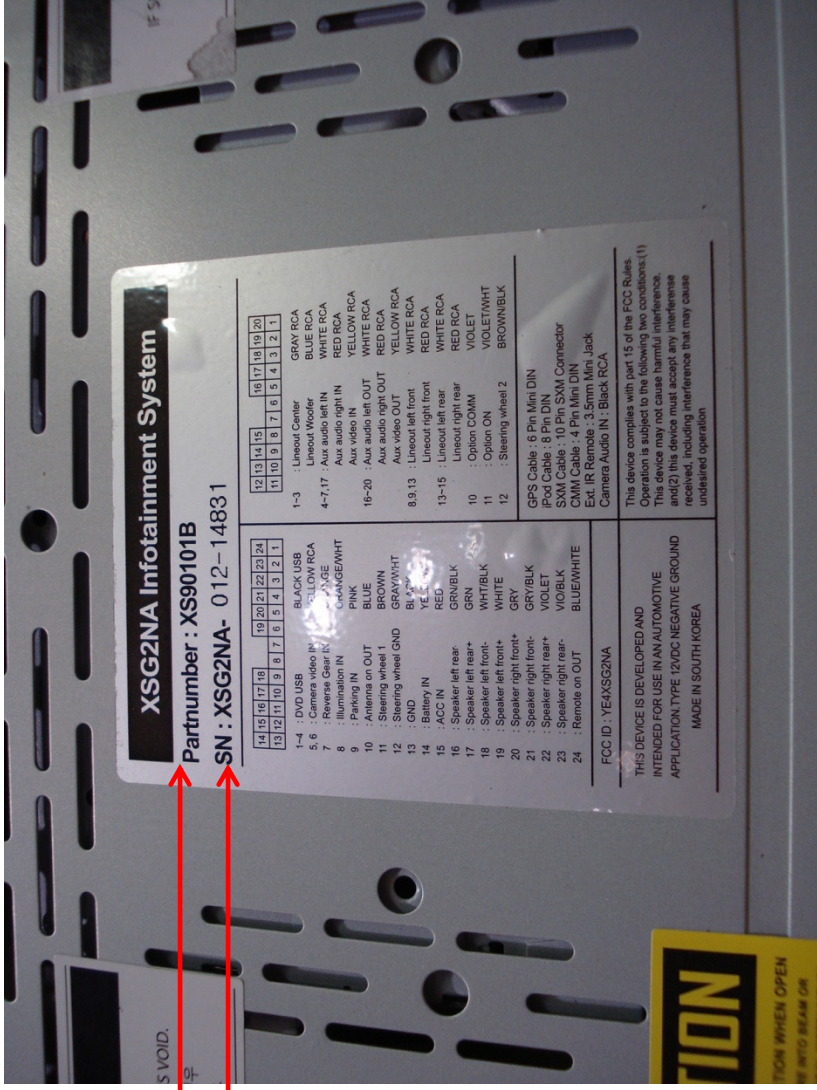
# Xite Infotainment System

## XS90101B

Identifying Model and Serial #

Model # (XS90101B)

Serial # (012-14831)

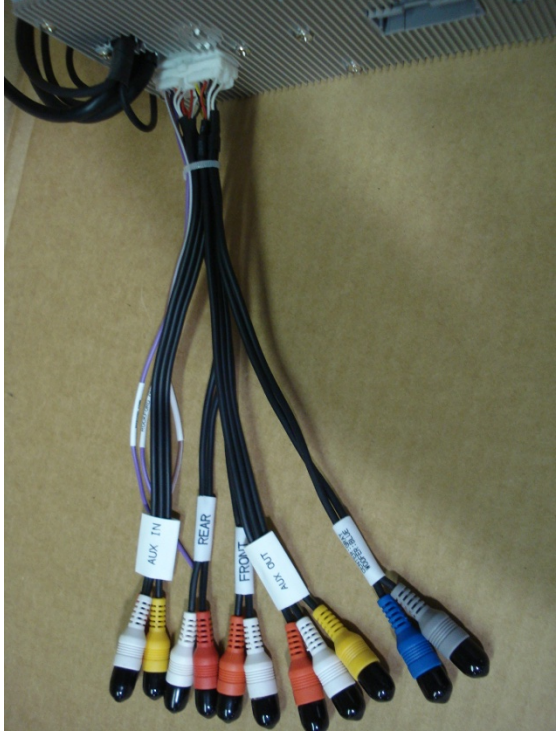




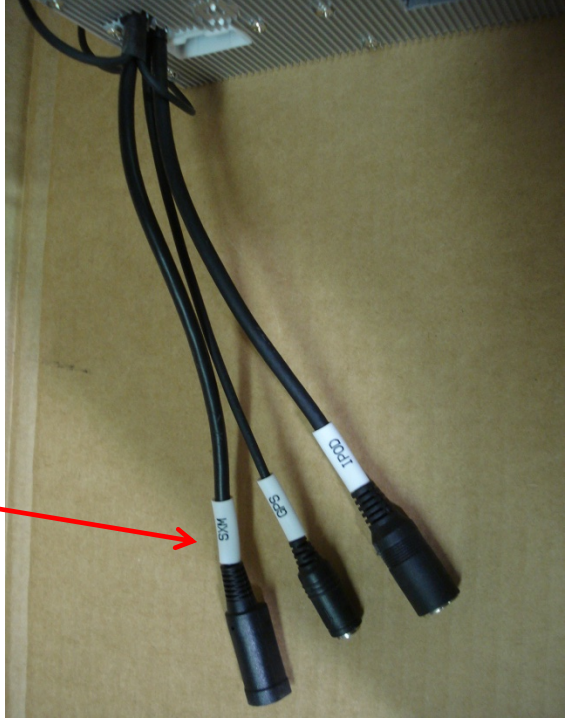
# Xite Infotainment System

## XS90101B cont..

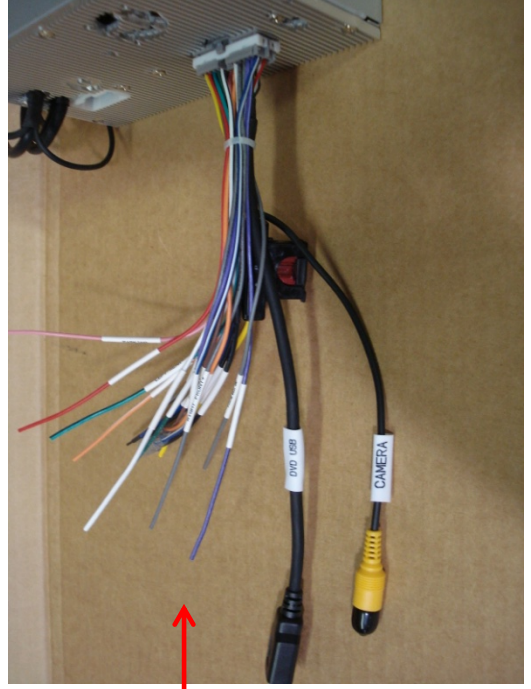
### Inputs and Outputs



Aux Output to overhead TV



- Sirius Input
- GPS Input
- iPod Input



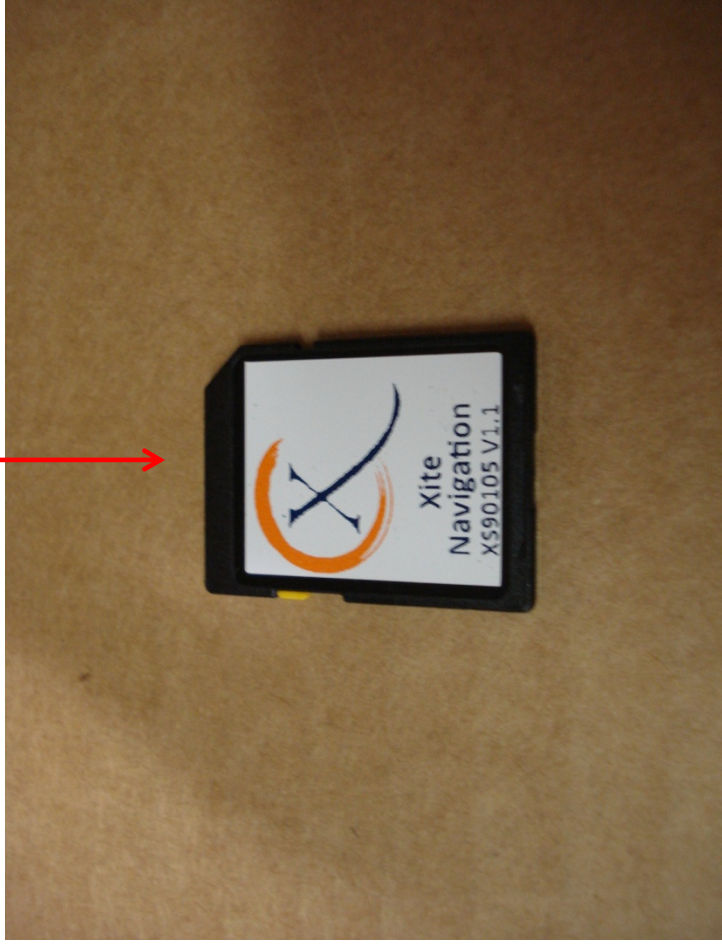
- Power Input
- Ground Input
- Speaker Output
- USB Input
- Camera Video Input (Not Used)

# Xite Infotainment System

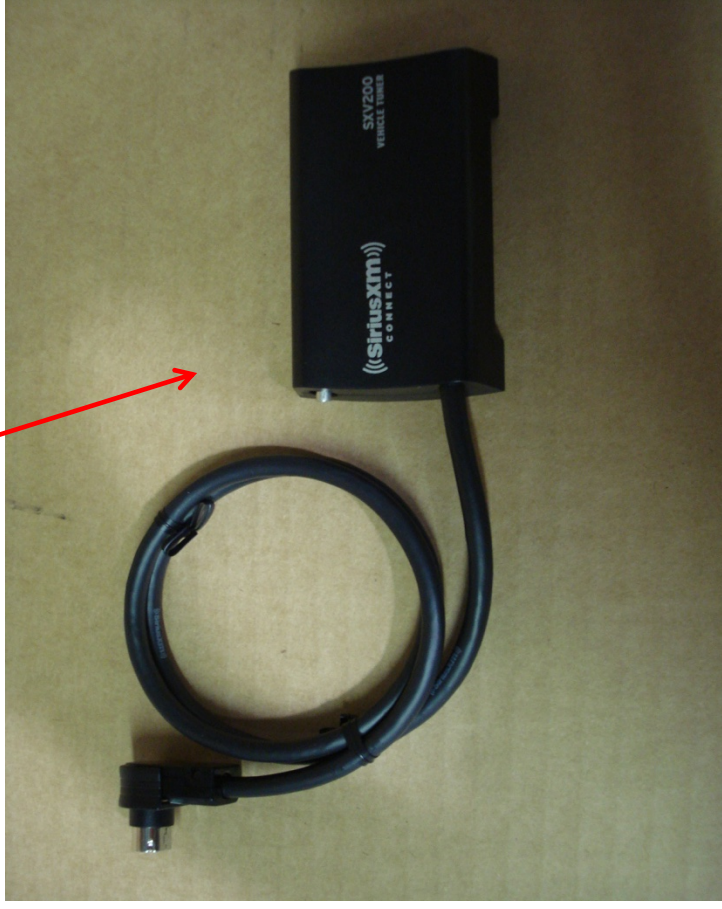
*XS90101B cont..*

## Supplied Accessories

**Xite Navigation Card**  
(Part # XS90105)



**Sirius Tuner**  
(Part # SXV100B or SXV200B)





**Parts utilized with the Xite G2 in the  
Entegra Motor home**

**iPod Cable PART # XS-90195**



**USB Ext. Cable PART # XS-90193**

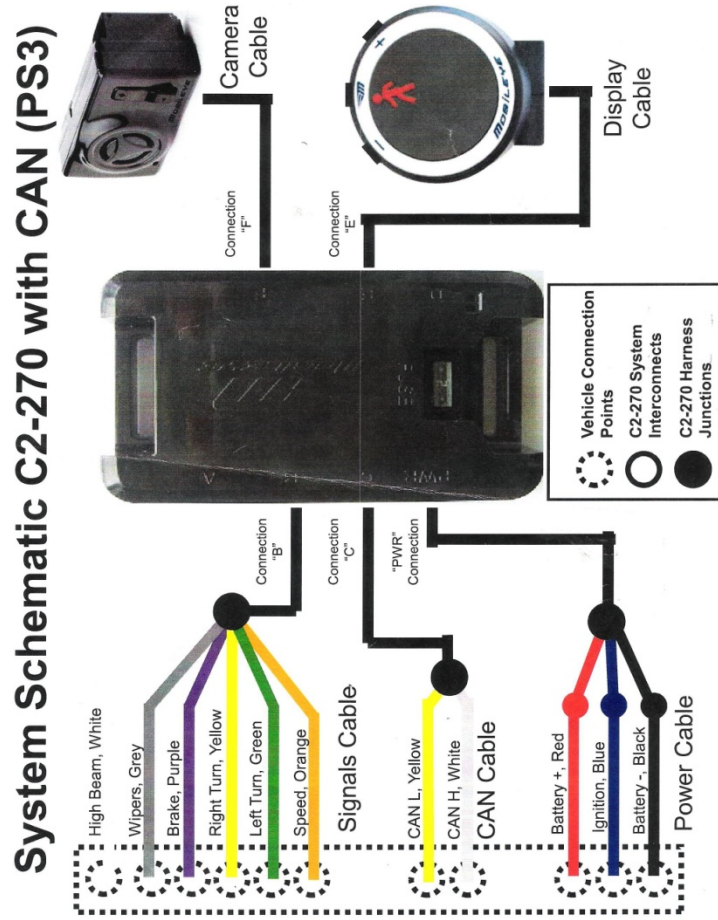


**GPS ANTENNA  
PART # XS-90194**



# Mobileye Collision Avoidance System

## Wiring Diagram





# Mobileye Collision Avoidance System cont..

## System Components

Rear View of Camera



Front View of Camera



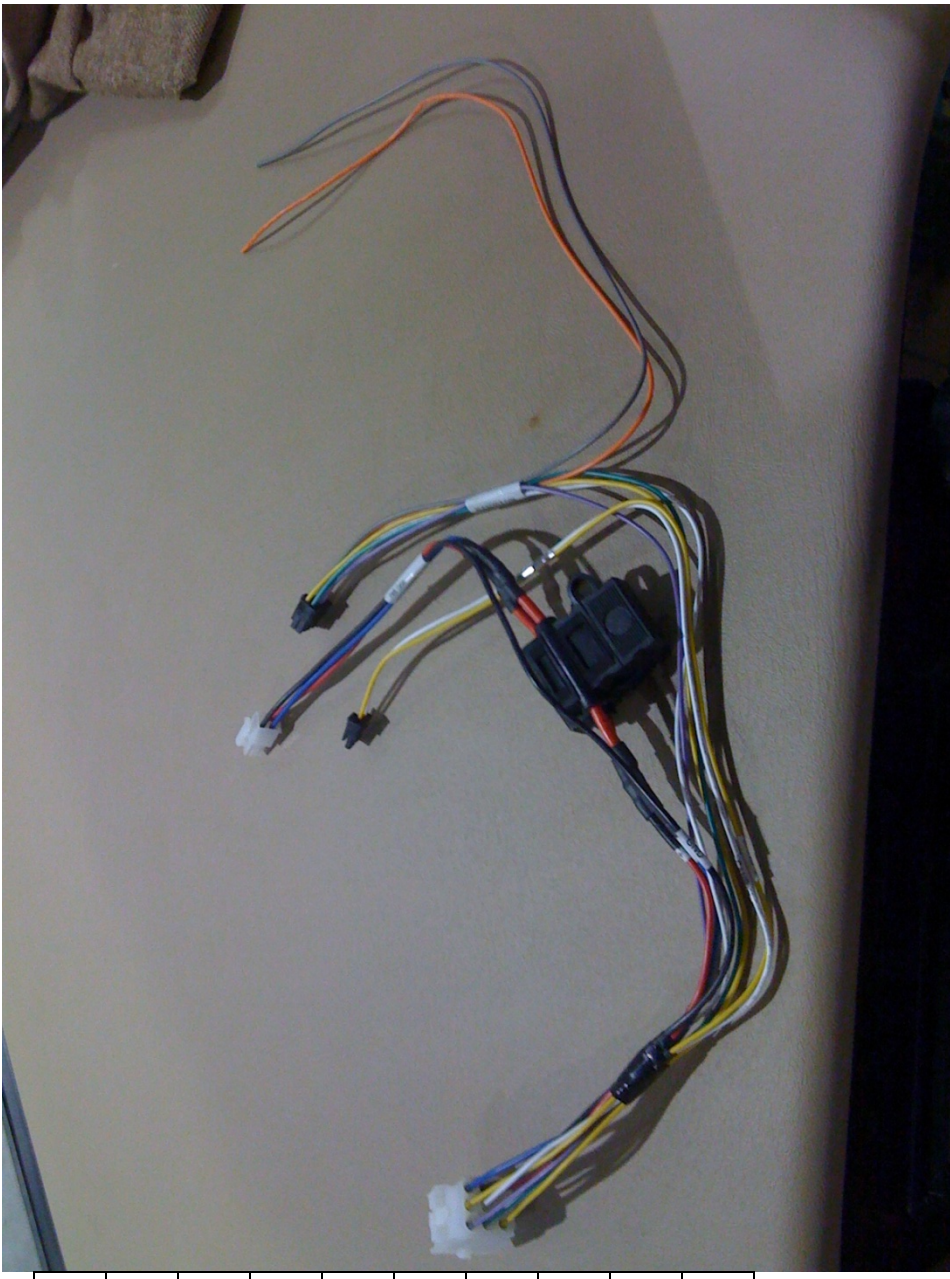




# Mobileye Collision Avoidance System cont..

## Mobileye Harness Pinout

<u>Pin</u>	<u>Color</u>	<u>Connection</u>
1	Yellow	Right Turn
2	Green	Left Turn
3	White	Hi Beam
4	Grey	Wiper
5	White	Can B Hi
6	Yellow	Can B Lo
7	Red	Battery +
8	Black	Ground
9	Blue	Ignition



\*Note: Speed(orange) and Brake(Purple) not connected\*

# Mobility

## Collision Avoidance System cont..

### Mobility Module Mounting Location and Connections



- PWR: Power Harness
- A: Kvaser Cable (usb cable)
- B: Signals Cable-vehicle signals
- C: Can Cable (Can signals)
- D: Not Used
- E: Display Cable
- F: Camera Cable

Note: Kvaser cable only used during calibration



# Mobileye Collision Avoidance System cont..

Mobileye Display Mounting Location



# Mobileye

## *Collision Avoidance System cont..*

### Key Features of the Mobileye System

#### Forward Collision Warning

Which includes Motorcycle Detection, alerts up to 2.7 seconds before an anticipated collision with a vehicle ahead.

#### Lane Departure Warning

Anticipates an unintentional deviation from the driving lane, and issues a directional alert.

#### Headway Monitoring

Assists the driver in keeping a safe driving distance, and issues an alert when the headway distance becomes dangerous.

#### Pedestrian Collision Warning

Which includes Bicycle Detection, alerts the driver when a pedestrian or cyclist enters the vehicle's path in dangerous proximity to the vehicle.



# Mobileye

## *Collision Avoidance System cont..*

### Setting Adjustments

#### 1. Display Brightness:

- Press the Mobileye button once (center button)
- Press the (-) (+) buttons to decrease/increase brightness

#### 2. Headway Warning Timing

- Press the Mobileye button twice
- Press the (-) to decrease the headway warning timing, or press (+) to increase it

#### 3. Lane Departure Warning Sensitivity

- Press the Mobileye button three times
- Press the (-) button to decrease LDW sensitivity, or press (+) to increase it

#### 4. Pedestrian Collision Warning Sensitivity

- Press the Mobileye button four times
- Press the (-) to decrease the PCW sensitivity, or press (+) to increase it.
  - Level 0 disables PCW
- Level 1 alert would be given up to 10 meters
- Level 2 alert would be given up to 30m (recommended)

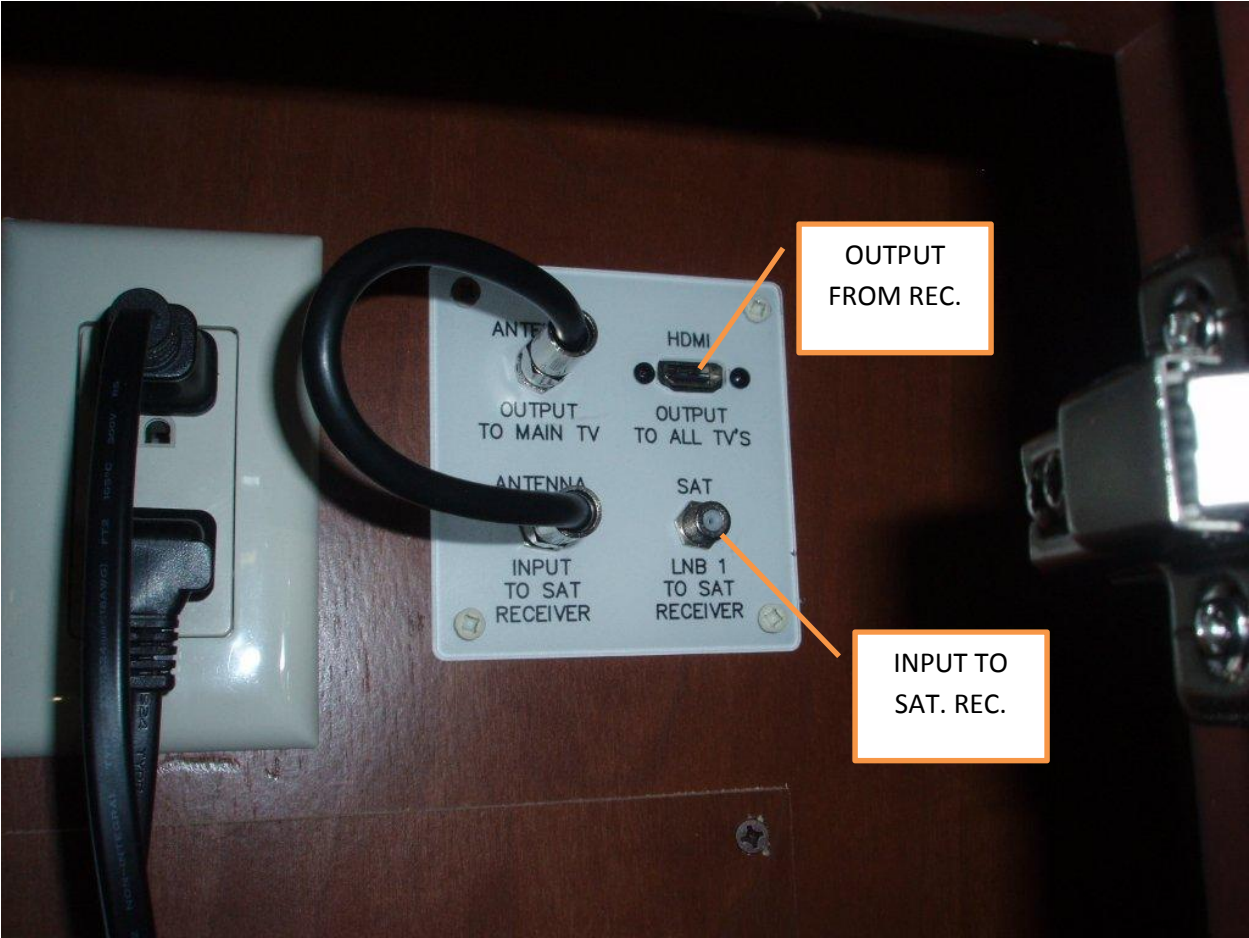
#### 5. Volume Control

- Press the (-) button (repeatedly) to decrease volume
  - There are 6 volume levels (0-5)
  - Level 0 disables LDW and HM alerts





MAIN TV SAT FEED IN ENT. CENTER









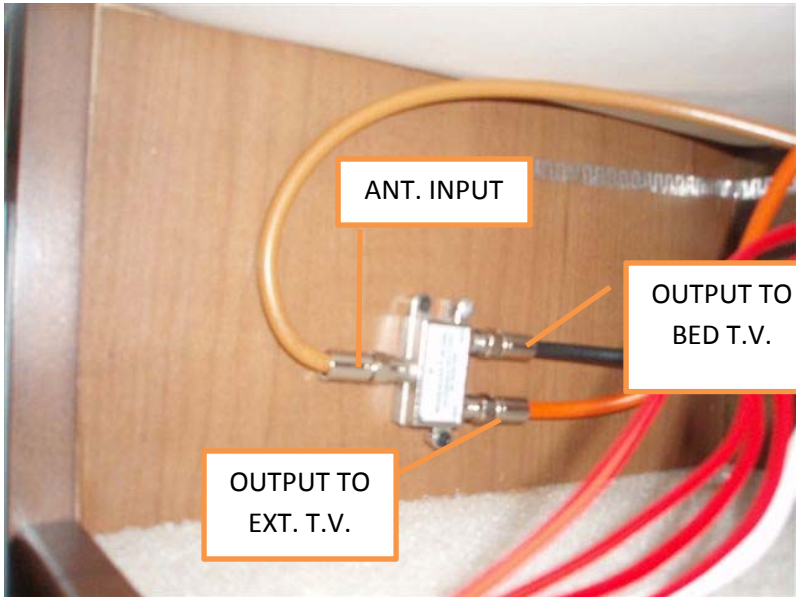
SAT 1 TO  
BED T.V.

VANITY SLIDEOUT BEHIND T.V.



OUTPUT FROM  
REC 2 TO BED  
T.V.

TO REC.  
FROM LNB2



ANT. INPUT

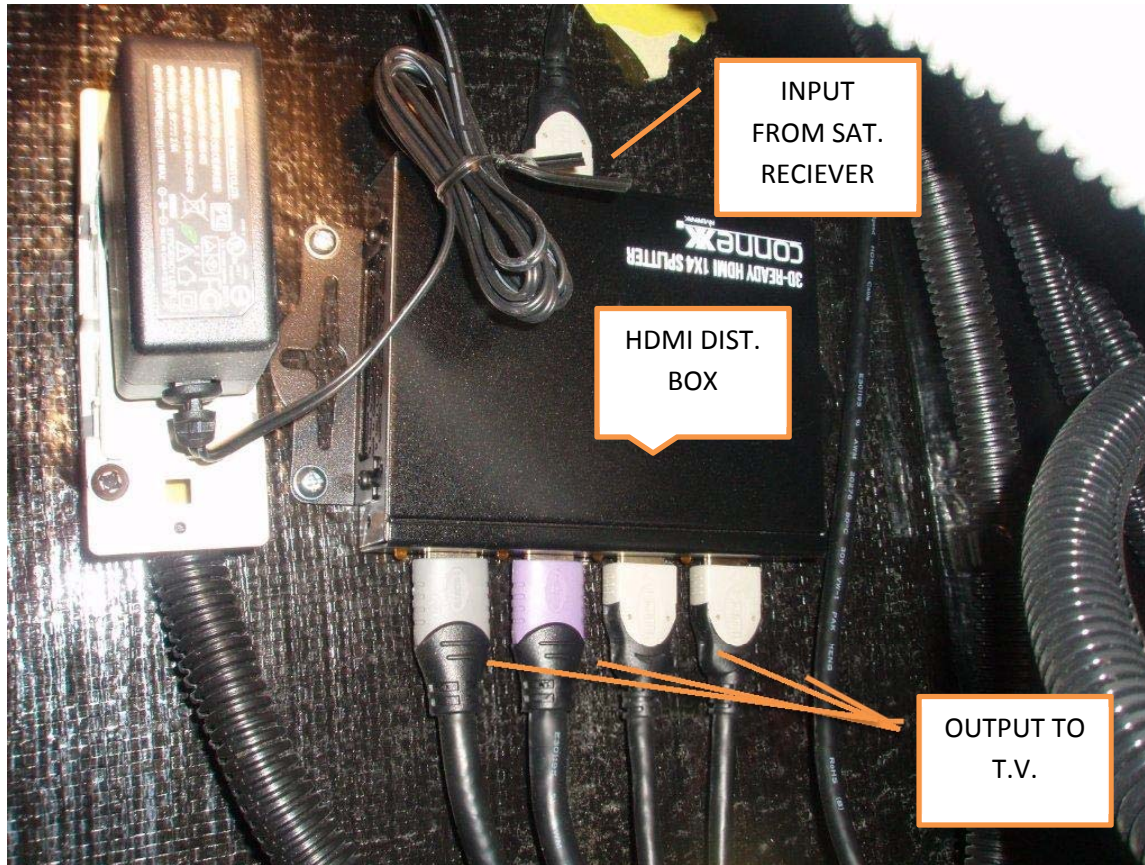
OUTPUT TO  
BED T.V.

OUTPUT TO  
EXT. T.V.



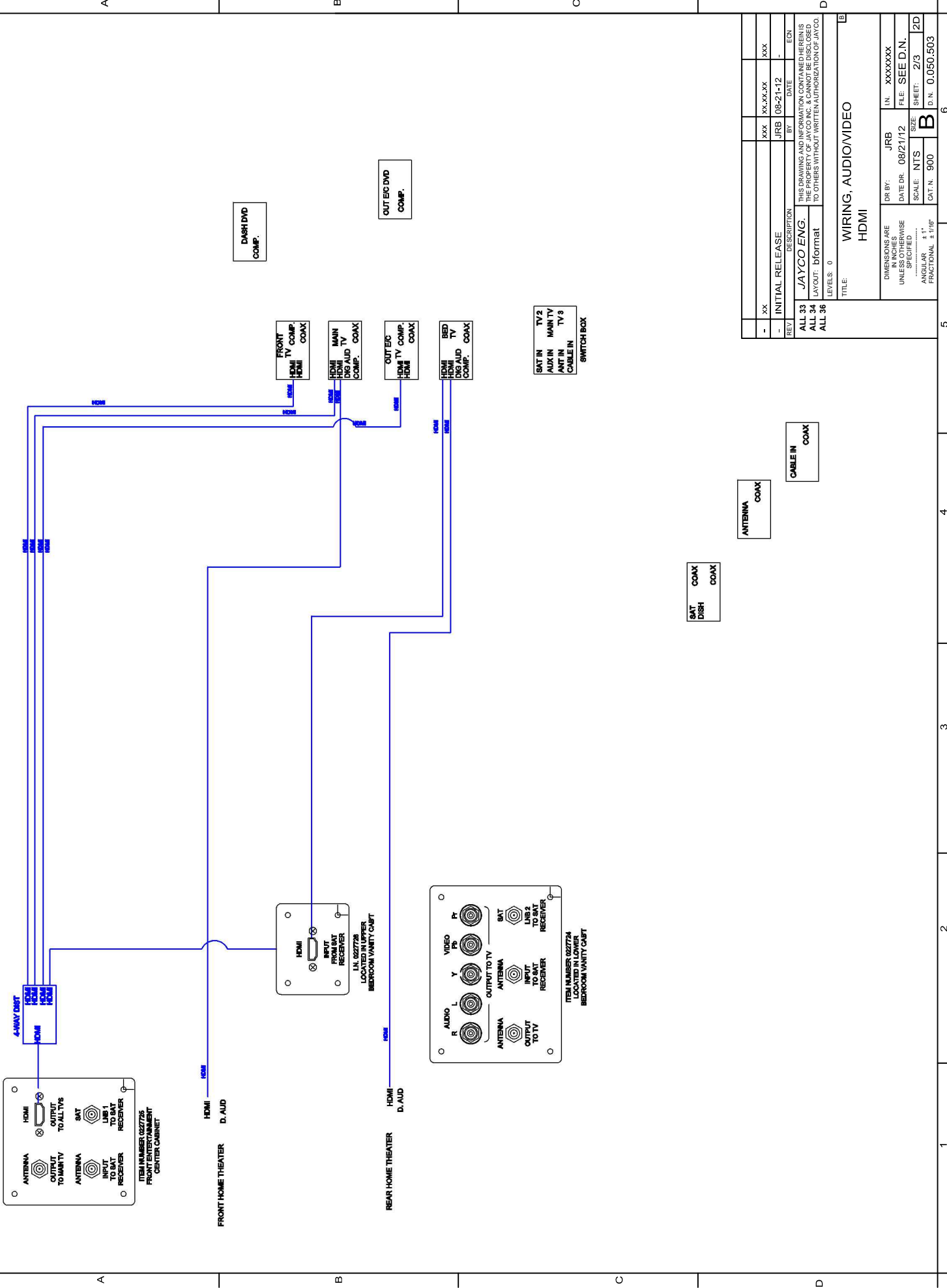


## 2. 2013 HD SATELLITE DISTRIBUTION BOX



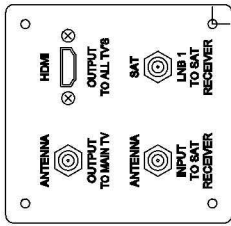






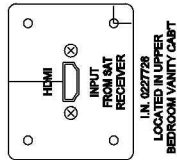
REV	DESCRIPTION	DATE	BY	DR BY	IN.	FILE	SHEET	SIZE
-	INITIAL RELEASE	06-21-12	JRB	JRB	08/21/12	SEE D.N.	2/3	2D
THIS DRAWING AND INFORMATION CONTAINED HEREIN IS THE PROPERTY OF JAYCO ENGINEERING. IT IS TO BE USED ONLY BY THE PERSON OR COMPANY TO WHOM IT IS ISSUED AND NOT TO BE REPRODUCED OR COPIED IN ANY MANNER WITHOUT WRITTEN AUTHORIZATION OF JAYCO.								
TITLE: <b>WIRING, AUDIO/VIDEO</b> HDMII								
DIMENSIONS ARE IN INCHES UNLESS OTHERWISE SPECIFIED SCALE: NTS DRAWING NUMBER: CAT. N. 900 PROJECT NUMBER: D. N. 0.050.503								



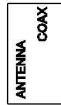
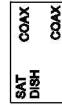
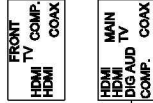
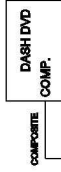
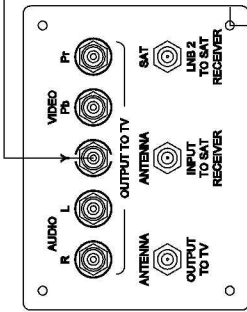


FRONT HOME THEATER  
HDMI  
D. AUD.

DIGITAL AUDIO



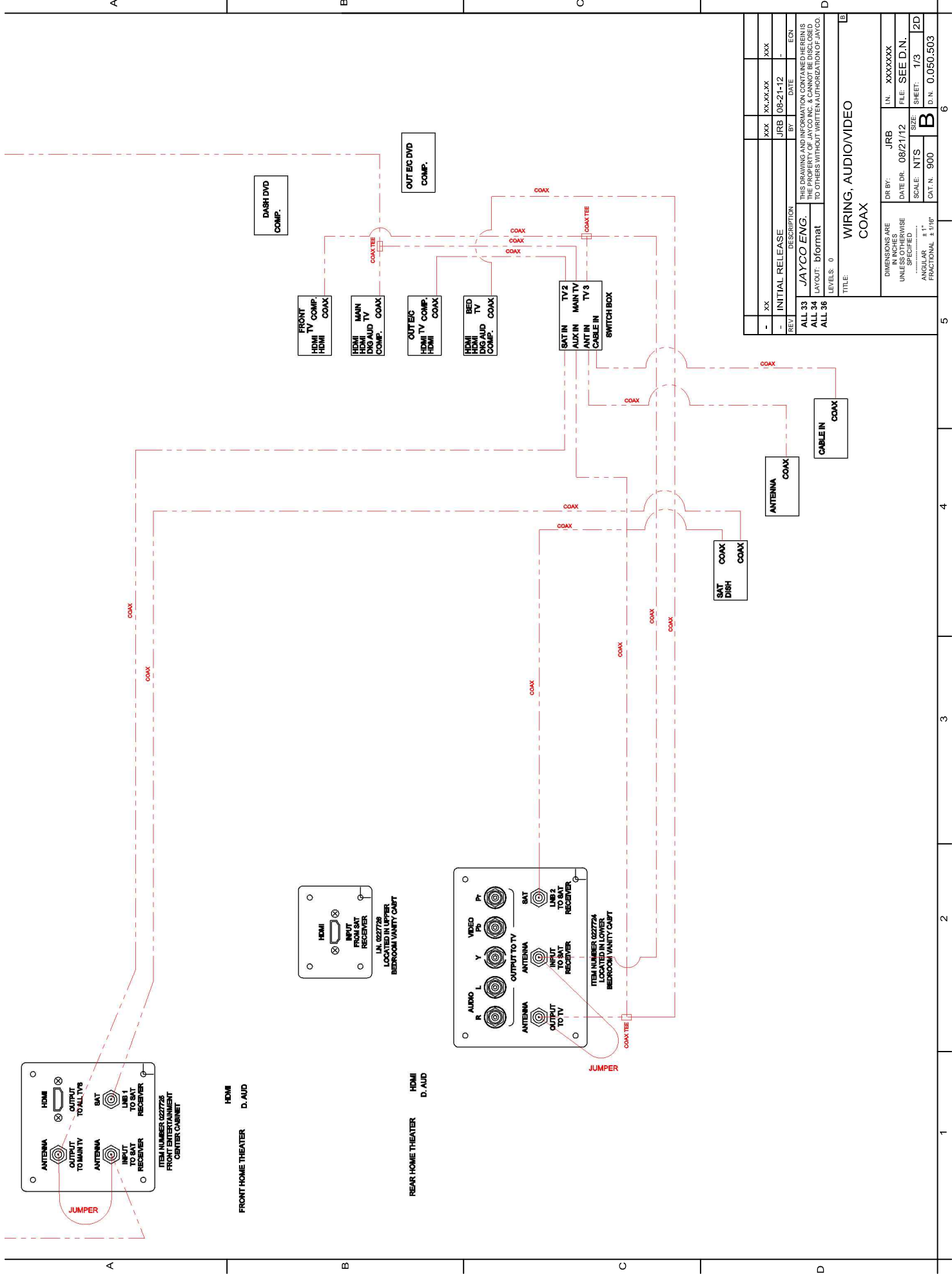
REAR HOME THEATER  
HDMI  
D. AUD.



REV	DESCRIPTION	DATE	BY	ECN
-	INITIAL RELEASE	08-21-12	JRB	-
xx		xx.xx.xx	xxx	xxx
ALL 33	THIS DRAWING AND INFORMATION CONTAINED HEREIN IS THE PROPERTY OF JAYCO INC. & CANNOT BE DISCLOSED TO OTHERS WITHOUT WRITTEN AUTHORIZATION OF JAYCO.			
ALL 34	LAYOUT: bformat			
ALL 36	LEVELS: 0			
TITLE: WIRING, AUDIO/VIDEO COMPONENT/DIGITAL				
DIMENSIONS ARE IN INCHES UNLESS OTHERWISE SPECIFIED		DR BY: JRB	IN: xxxxxx	
ANGULAR ± 1°		DATE DR: 08/21/12	FILE: SEE D.N.	
FRACTIONAL ± 1/16"		SCALE: NTS	SIZE: 3/32	2D
		CAT. N. 900	B	D. N. 0.050.503







XX	INITIAL RELEASE	XX	XX.XX.XX	XXX
JRB	DESCRIPTION	BY	DATE	EDN
ALL 33	JAYCO ENG.	THIS DRAWING AND INFORMATION CONTAINED HEREIN IS THE PROPERTY OF JAYCO. IT IS TO BE USED ONLY FOR THE PROJECT AND NOT TO BE REPRODUCED OR COPIED IN ANY MANNER WITHOUT WRITTEN AUTHORIZATION OF JAYCO.		
ALL 34	LAYOUT: bformat	LEVELS: 0		
ALL 36		TITLE: WIRING, AUDIO/VIDEO		
DIMENSIONS ARE IN INCHES UNLESS OTHERWISE SPECIFIED		DR BY: JRB	IN. XXXXXXXX	
SCALE: NTS		DATE DR: 08/21/12	FILE: SEE D.N.	
FRACTIONAL ± 1/16"		SHEET: 1/3	SIZE: 2D	
		CAT. N. 900	B	D. N. 0.050.503

A B C D

1 2 3 4 5 6





# 1. High Definition Box for Satellite

*Located on the ceiling near the rear bulkhead of the cargo area between the frame rails.*



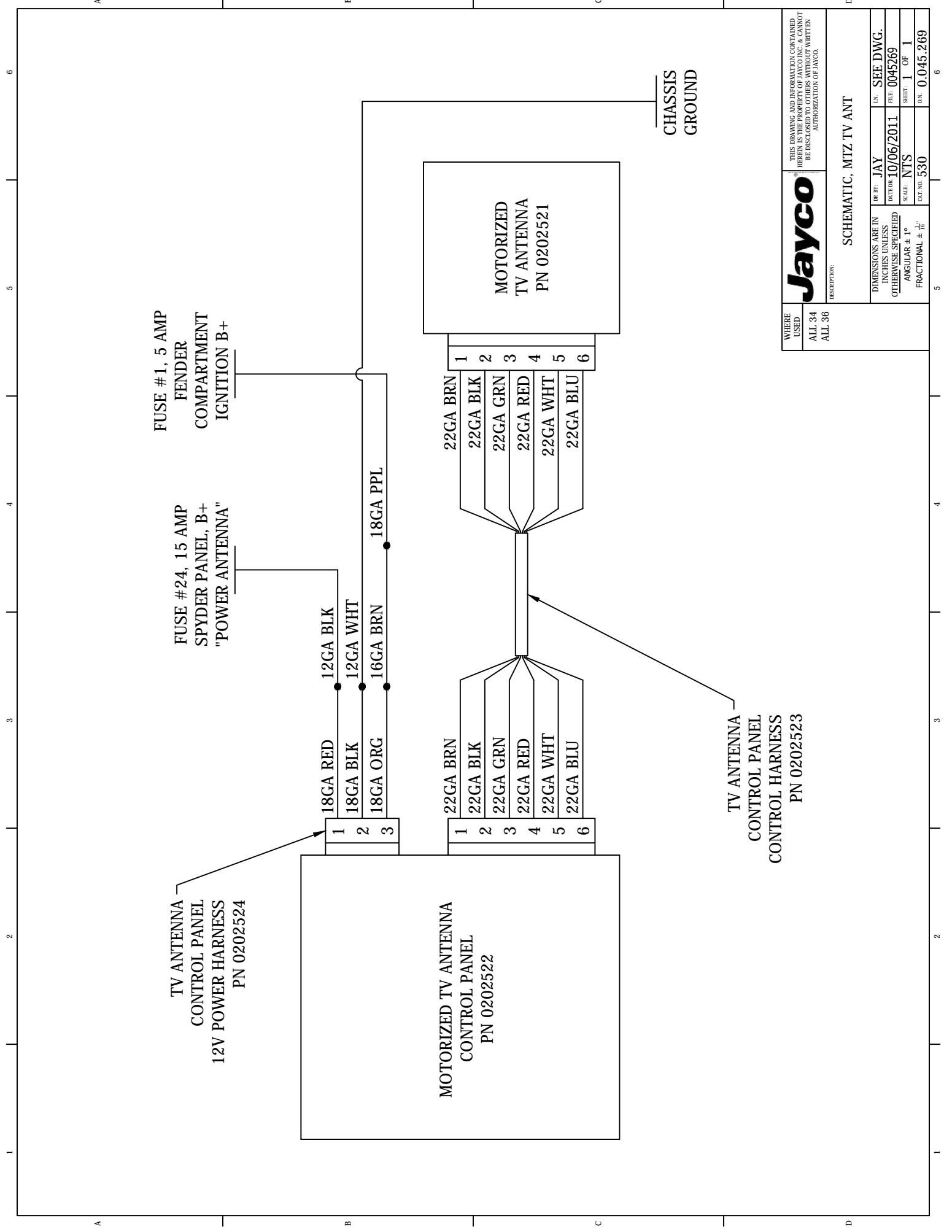




Controls antenna and cable input







FUSE #1, 5 AMP  
FENDER  
COMPARTMENT  
IGNITION B+

FUSE #24, 15 AMP  
SPYDER PANEL, B+  
"POWER ANTENNA"

TV ANTENNA  
CONTROL PANEL  
12V POWER HARNESS  
PN 0202524

MOTORIZED TV ANTENNA  
CONTROL PANEL  
PN 0202522

MOTORIZED  
TV ANTENNA  
PN 0202521

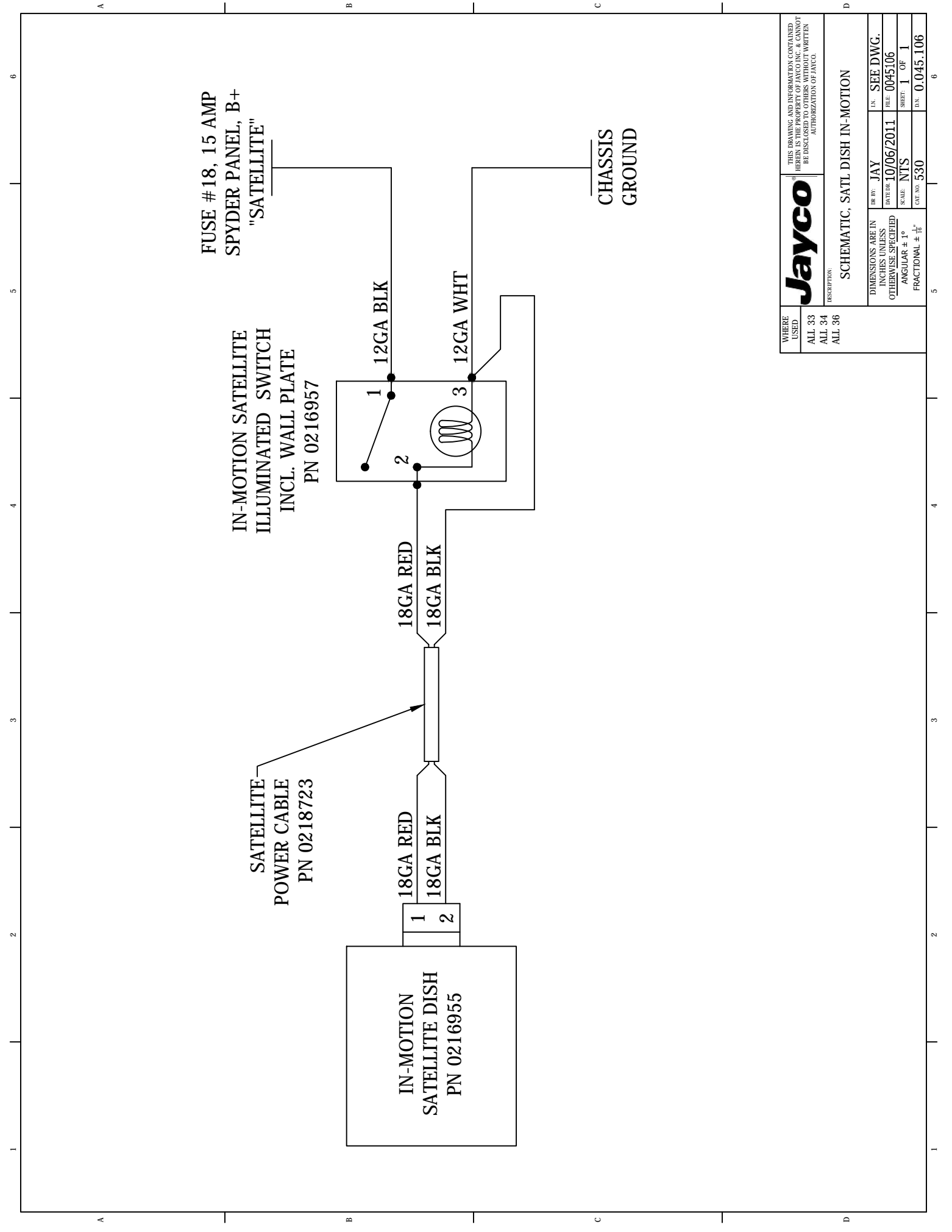
CHASSIS  
GROUND

TV ANTENNA  
CONTROL PANEL  
CONTROL HARNESS  
PN 0202523

WHERE USED	THIS DRAWING AND INFORMATION CONTAINED HEREIN IS UNCLASSIFIED AND NOT BE DISCLOSED TO OTHERS WITHOUT WRITTEN AUTHORIZATION OF JAYCO.		
ALL 34		DR BY: JAY	DN: SEE DWG.
ALL 36		DATE: 10/06/2011	FILE: 0045269
		SCALE: NTS	SHEET: 1 OF 1
		CAT. NO: 530	D.W. 0.045.269
DESCRIPTION: SCHEMATIC, MTZ TV ANT			
DIMENSIONS ARE IN INCHES UNLESS OTHERWISE SPECIFIED			
ANGULAR ± 1°			
FRACTIONAL ± 1/16"			





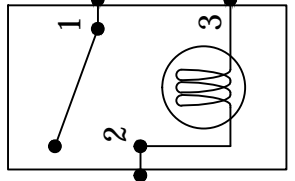


FUSE #18, 15 AMP  
 SPYDER PANEL, B+  
 "SATELLITE"

IN-MOTION SATELLITE  
 ILLUMINATED SWITCH  
 INCL. WALL PLATE  
 PN 0216957

SATELLITE  
 POWER CABLE  
 PN 0218723

IN-MOTION  
 SATELLITE DISH  
 PN 0216955



CHASSIS  
 GROUND

<b>Jayco</b>		THIS DRAWING AND INFORMATION CONTAINED HEREIN IS UNCLASSIFIED AND IS NOT TO BE DISCLOSED TO OTHERS WITHOUT WRITTEN AUTHORIZATION OF JAYCO.	
WHERE USED	DESCRIPTION:	SCHEMATIC, SATL DISH IN-MOTION	
ALL 33	DR BY: JAY	DN: SEE DWG.	
ALL 34	DATE: 10/06/2011	FILE: 0045106	
ALL 36	SCALE: NTS	SHEET: 1 OF 1	
	CAT. NO: 530	DN: 0.045.106	









