



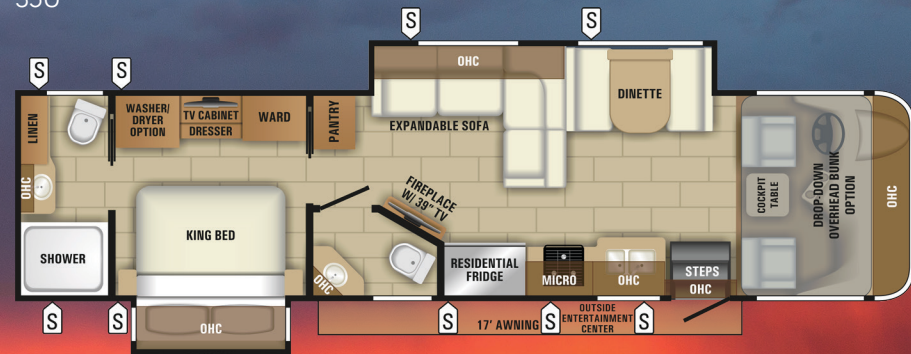
ENTEGRACOACH®

2019 ENTEGRA EMBLEM

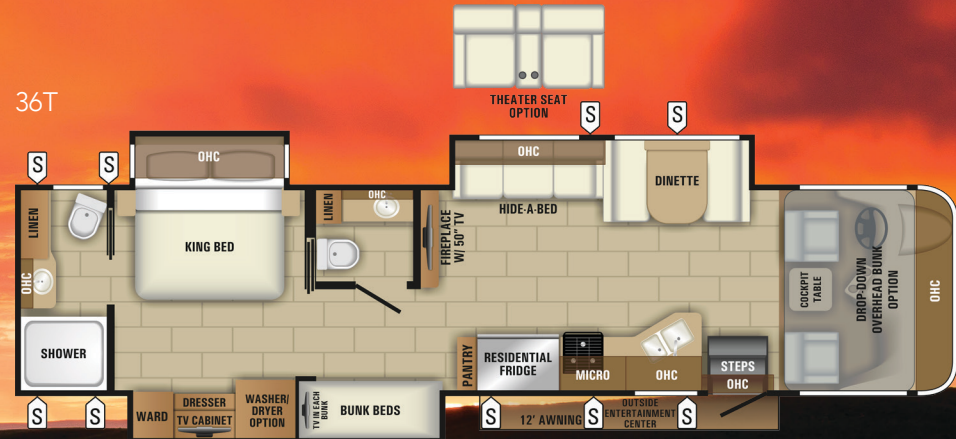
PRODUCT HIGHLIGHTS

- One-piece Fiberglass Front and Rear Cap
- Heavy-Duty Front Stabilizer Bar
- Rear Stabilizer Bar
- Computer-Balanced Driveshaft
- Jounce Bumpers
- Seamless, Crowned Fiberglass Roof
- Lockable Pass-Through Storage Compartments with Slam Latches
- 2-Year Limited Warranty
- Residential Refrigerator
- Thetford® Macerator System

35U



36T



CUSTOMER VALUE PACKAGE

Ride and Handling Package: Heavy-duty front stabilizer bar, Rear stabilizer bar, Computer-balanced driveshaft, Jounce bumpers
Automatic hydraulic leveling jacks
Sony® in-dash radio
Backup and sideview cameras
Frameless windows
Electric patio awning with LED lights
Slideout awnings
Exterior entertainment center with LED TV mounted on swivel bracket and single-disc DVD/FM radio
Onan® Marquis Gold Genset 5,500-watt generator with auto-gen start 2000-watt inverter
50-amp electrical service
10 Gallon gas/electric water heater
Solid-surface kitchen countertops with integrated stainless steel sink
LED living room TV
Day/night roller shades
Driver/passenger cockpit table

STANDARD EXTERIOR EQUIPMENT

High-gloss fiberglass walls
Seamless, crowned fiberglass roof
Entrance door with industry's largest travel view window
One-piece fiberglass front and rear cap
Bead-foam insulation (R-24 max roof, R-9 max floor, R-8 max walls)
Electric-powered entrance step
Lockable pass-through storage compartments with slam latches
12V house battery
12V demand water pump
Thetford® Sani-Con® Turbo Macerator system
120" Panoramic windshield

STANDARD INTERIOR EQUIPMENT

84-inch interior ceiling height with padded vinyl ceiling
High-intensity recessed LED ceiling lights
Ball-bearing drawer guides
Furrion® gas cooktop
Convection microwave oven
21 cu.ft. residential refrigerator
Water filtration system
Dream Dinette™ mechanism, easily raises/lowers tabletop
2-point lap safety belts on all seating areas
Soft-touch vinyl dash

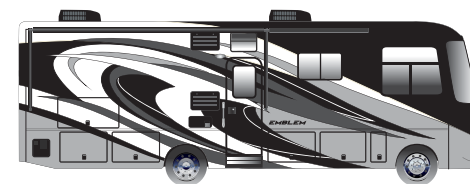
35,000-BTU auto-ignition ducted furnace
Prep for satellite dish
Cable TV hookup with RG-6 coax & video selector switch
Digital antenna with signal booster
Shower with surround, glass door, skylight and light
Stainless steel lavatory sink
Porcelain toilet
Powered roof vent in bathroom with wall switch
Bedroom 32-inch LED TV
Bunks—300-pound rating (36T)
Decorative kitchen backsplash
Entrance door with large frameless window and keyless entry

STANDARD DRIVING EQUIPMENT

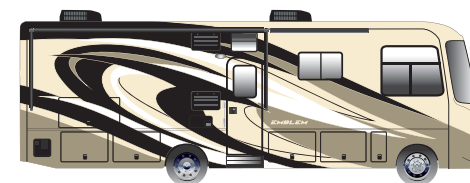
Ford® F53 chassis
• 6.8L Triton® V-10 320 HP gas engine with electronic fuel injection and 460lb-ft torque
• 6-speed automatic TorqShift® transmission with overdrive and tow-haul mode
130-amp alternator
56-pound, 16.5-gallon propane tank
12V chassis battery
Front and rear disc, 4-wheel anti-lock brakes
• 5,000-pound rear hitch receiver with dual connector and 7-pin plug
6-way power, swivel driver and passenger seats
Flush-mount LED marker lights
Third brake light

OPTIONS

Canadian Standards
3 Premium Paint Packages: Bethpage, Spyglass, Pebble Beach
Drop-down overhead bunk in cab area with 750 lb. capacity
Washer/Dryer combination (36T, 35U)
Power Theater Seats (n/a 35U)
Oven



Bethpage Paint Package



Pebble Beach Paint Package



Spyglass Paint Package

Floorplan	Exterior Length	Exterior Width	Exterior Height w/AC	Interior Height	Wheel Base	Fresh Water Capacity (gal.) (includes water heater)	Grey Waste Water Capacity (gal.)	Black Waste Water Capacity (gal.)
35U	TBD	101"	12' 7"	84"	TBD	TBD	TBD	TBD
36T	38' 2"	101"	12' 7"	84"	190"	72	40 / 40	51 / 51

It is important for your safety and enjoyment that you are aware of the weights and tow ratings of the RV you select. Consult a competent advisor for questions or advice. Whether you are new to RVing or a veteran, get a feel for the performance of your RV before heading out on the roadways. When you tow a vehicle with your RV, you must drive differently than when you drive a single vehicle. Practice hooking up, driving, backing up and braking in a safe environment or seek out professional instruction. Jayco affixes a weight label to each RV which lists weight information for that vehicle. Refer to that label to verify the vehicle will meet your requirements. See specifications chart above.

Gross Vehicle Weight Rating (GVWR): The maximum permissible weight of the motorhome, including the Unloaded Vehicle Weight (UWW) plus passengers, personal items, all cargo, fluids, options and dealer-installed accessories. The GVWR is equal to or greater than the sum of the UWW and the Cargo Carrying Capacity. Gross Combined Weight Rating (GCWR): The maximum allowable combined weight of the motorhome used as a tow vehicle and the attached towed vehicle.



Entegra Coach, Inc., P.O. Box 460, Middlebury, IN 46540, www.entegracoach.com. See dealer for further information and prices. All information in this brochure is the latest available at the time of publication approval. Entegra Coach reserves the right to make changes and to discontinue models without notice or obligation. Photos in this brochure may show optional equipment and props for photography purposes. RVs built for sale in Canada may differ to conform to Canadian codes. ©2018 Entegra Coach, Inc., Entegra Emblem flyer 2018.indd EJ 11-17 Printed in U.S.A.

