

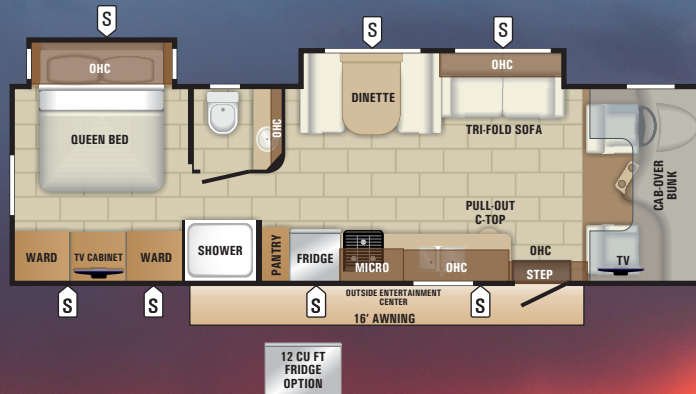


2018 ENTEGRA ESTEEM

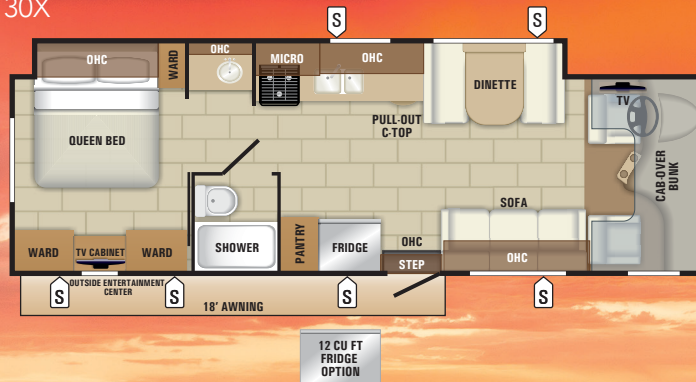
PRODUCT HIGHLIGHTS

- One-piece Seamless Front Cap w/ 30" x 82" Automotive-Bonded Window
- Hellwig® Helper Springs
- Bilstein Shocks
- Heavy-Duty Stabilizer Bar
- 1,000 watt Inverter
- Frameless Windows
- One-Piece Fiberglass Roof
- Slam-Latch Baggage Doors
- 2-year Limited Warranty

29V



30X



31L



2018 ENTEGRA ESTEEM STANDARDS



CUSTOMER VALUE PACKAGE

Ride and Handling Package: Computer-balanced driveshaft, Hellwig helper springs, rubber isolation mounts, Bilstein shocks, oversized stabilizer bar
 24" LED TV in bedroom
 1,000 Watt inverter
 Automatic hydraulic leveling jacks
 Backup & sideview cameras
 12V Electric awning w/ LED lights
 Exterior 32" LED TV
 Frameless windows
 Seamless, molded front fiberglass cap w/30"x82" automotive-bonded panoramic front window
 Hidden-hinge cabinetry
 Sony® infotainment system
 Chrome, remote-controlled and heated sideview mirrors
 Solid-surface kitchen countertops w/ matching sink covers

STANDARD EXTERIOR EQUIPMENT

TuffShell vacuum-bonded, laminated floor, sidewalls & roof
 Bead-foam insulation (R-24 max roof, R-9 max floor, R-5 max walls)
 White fiberglass exterior w/ vinyl graphics
 Fiberglass running boards
 One-piece fiberglass roof
 Keyless entry door, touchpad lock system
 Electric-powered entrance steps
 High-output marine grade exterior speakers
 Locking exterior storage compartments
 Onan® 4,000-watt MicroQuiet generator w/ auto-changeover
 House battery on slideout tray

Illuminated battery disconnect switch
 12V electrical system w/120V, 60-amp power converter
 30-amp power cord
 120V GFCI-protected exterior receptacle
 56-pound propane tank
 Heated holding tanks (12V pads)
 4-inch bumper-tube w/sewer hose storage
 Black tank sprayer
 Outside shower
 LED taillights

STANDARD INTERIOR EQUIPMENT

Atwood® 6-gallon gas/electric DSI auto-ignition water heater
 84-inch ceiling height w/ padded vinyl ceiling
 High-intensity, recessed LED ceiling lights
 Sienna Maple cabinetry w/ shaker style doors
 Side-hinged, hidden-hinge overhead doors
 Satin nickel hardware
 Ball-bearing drawer guides
 Hardwood fascia
 12V demand water pump
 Water filtration system
 Dream Dinette™
 Vinyl flooring throughout
 Interior command center
 15,000-BTU A/C w/ heat pump

31,000-BTU auto-ignition furnace w/ wall thermostat
 32" LED TV
 Cable TV hookup w/ RG-6 coax
 Satellite dish prep
 Day/night roller shades
 Full cab-over bunk (750-pound rating)
 Custom dash applique
 Recessed stainless steel Atwood® 3-burner range w/ 9,000-BTU SuperBurner™ and solid-surface covers
 Oven
 8-cubic-foot, flush-mount, double door refrigerator with stainless steel finish
 Recessed stainless steel sinks in kitchen and bathroom
 Shower w/ decorative surround
 Skylight in shower
 Toilet w/ foot flush
 Queen-size bed w/ bedspread
 Fan-Tastic Fan in bedroom
 Light in wardrobe

STANDARD DRIVING EQUIPMENT

Ford E-450 chassis I 14,500-pound GVWR, 22,000-pound GCWR
 • Triton 6.8L EFI V-10 305HP engine w/420 lb-ft torque

- 6-speed automatic TorqShift series transmission w/ overdrive
- 7,500-pound hitch w/750-lb tongue capacity & 7-pin plug

55-gallon fuel tank
 120-amp alternator
 Auxiliary start switch
 Power anti-lock brakes w/power steering
 Dash A/C
 Cruise control
 Tilt steering wheel
 6-way power driver seat
 Driver & passenger air bags
 Power windows & door locks
 Third brake light
 Wheel liners

OPTIONS

(2) 24" LED TV's in Bunk Area (31L only)
 12 cu.ft. refrigerator (29V & 30X only)
 Aluminum rims
 Full-body paint (comes equipped w/ slideout cover awnings)



Nutmeg Graphics Package



Carefree Paint Package



Voyage Paint Package

Floorplan	Exterior Length	Exterior Width	Exterior Height w/AC	Interior Height	Wheel Base	Fresh Water Capacity (gal.) (includes water heater)	Grey Waste Water Capacity (gal.)	Black Waste Water Capacity (gal.)
29V	32' 6"	100"	11' 6"	84"	223"	53	41	32
30X	32' 6"	100"	11' 6"	84"	223"	53	41	31
31L	32' 6"	100"	11' 6"	84"	223"	53	41	32

It is important for your safety and enjoyment that you are aware of the weights and tow ratings of the RV you select. Consult a competent advisor for questions or advice. Whether you are new to RVing or a veteran, get a feel for the performance of your RV before heading out on the roadways. When you tow a vehicle with your RV, you must drive differently than when you drive a single vehicle. Practice hooking up, driving, backing up and braking in a safe environment or seek out professional instruction. Jayco affixes a weight label to each RV which lists weight information for that vehicle. Refer to that label to verify the vehicle will meet your requirements. See specifications chart above.

Gross Vehicle Weight Rating (GVWR): The maximum permissible weight of the motorhome, including the Unloaded Vehicle Weight (UVW) plus passengers, personal items, all cargo, fluids, options and dealer-installed accessories. The GVWR is equal to or greater than the sum of the UVW and the Cargo Carrying Capacity. Gross Combined Weight Rating (GCWR): The maximum allowable combined weight of the motorhome used as a tow vehicle and the attached towed vehicle.



Entegra Coach, Inc., P.O. Box 460, Middlebury, IN 46540, www.entegracoach.com. See dealer for further information and prices. All information in this brochure is the latest available at the time of publication approval. Entegra Coach reserves the right to make changes and to discontinue models without notice or obligation. Photos in this brochure may show optional equipment and props for photography purposes. RVs built for sale in Canada may differ to conform to Canadian codes. ©2018 Entegra Coach, Inc., Entegra Esteem flyer 2018.indd EJ 11-17 Printed in U.S.A.

