

ASPIRE

ANTHEM

CORNERSTONE

2016



ENTEGRA
COACH®

THE QUIETEST RIDING, BEST HANDLING COACH ON THE MARKET TODAY. PERIOD.





*AT ENTEGRA COACH
WE CARE
AS MUCH ABOUT
GETTING THERE
AS BEING THERE*



THE QUIETEST RIDING, BEST HANDLING COACH ON THE MARKET TODAY. PERIOD.

HERE'S WHY:

SPARTAN® CHASSIS

With more than 30 years' history of custom chassis manufacturing, Spartan gives us the industry's premier foundation.

EXCLUSIVE X-BRIDGE™ FRAME

It's what we add to the chassis that really sets us apart: Our exclusive X-Bridge frame adds even more floor strength and structural rigidity, eliminating chassis flex and twisting; with it, the suspension—not the chassis—absorbs road shock and vibration.

WOOD FLOOR CONSTRUCTION

Our six-layer wood floors are some of the industry's thickest—reducing energy transmission, noise and vibration.

TILE AROUND THE CABINetry

We screw our cabinets directly to the wood floor and then tile around them; other manufacturers place cabinets on top of the tile, causing squeaks or cracking.

RESIDENTIAL-STYLE WALLS AND ROOF

Our roof combines crowned aluminum truss rafters on 16-inch centers with Flexfoil®, fiberglass insulation and ¾-inch plywood decking. Our walls, along with our front and rear caps, feature tucked-and-glued batting insulation—the same kind of fiberglass insulation found in sound-absorbing theater rooms.



ENTEGR A
COACH®

A luxury motorhome is driving on a paved road that curves through a scenic landscape. The road is flanked by lush green trees and grass. In the background, there are rolling hills and mountains under a dramatic sky with large, golden clouds. The sun is low on the horizon, creating a warm, golden glow. The motorhome is dark-colored with a sleek design and is moving towards the viewer.

CORNERSTONE

EXPERIENCE THE RIDE OF A LIFETIME

Crafting luxury coaches is an art, and the Cornerstone is our masterpiece. In it, power meets opulence—for a combination that's sure to turn heads.



FEATURES: Outside entertainment center | Exterior freezer | Powered slideout storage



FEATURES: Spacious bedroom with Tempur-Pedic® Cloud® Prima king-size mattress | Spacious kitchen with LED-lit, quartz countertops and flush-mounted induction cooktop

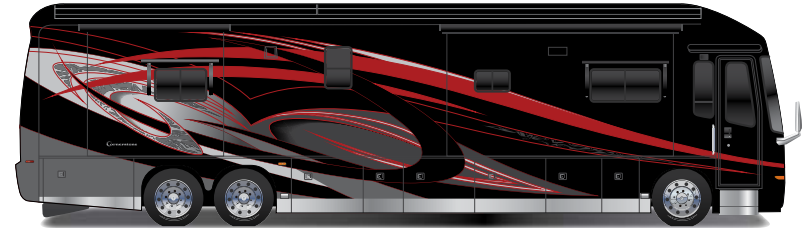
THE QUIETEST RIDING, BEST HANDLING COACH ON THE MARKET TODAY. PERIOD.



FEATURES: Porcelain-tiled shower and floor | Waste basket and sink-cover storage | Bathroom featuring LED-lit, quartz countertops with an integrated sink



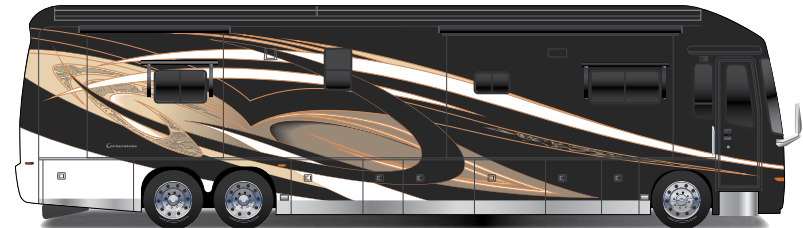
Electric Blue



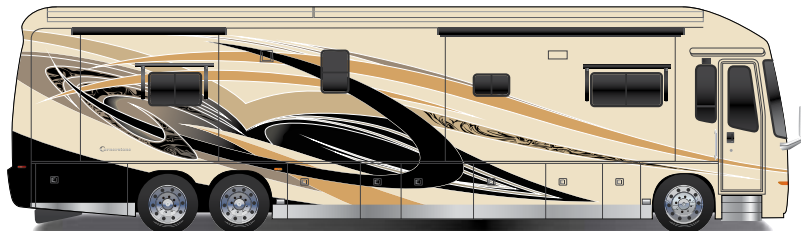
Fire Red



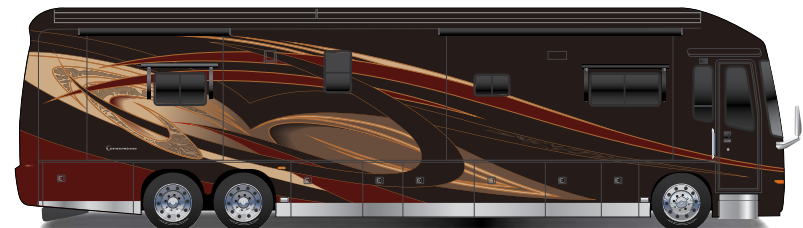
Topaz



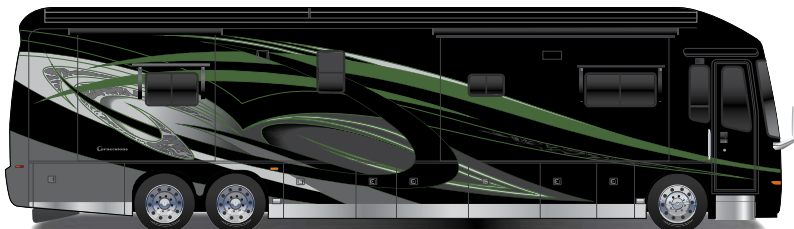
Sunlit



Silica Sand

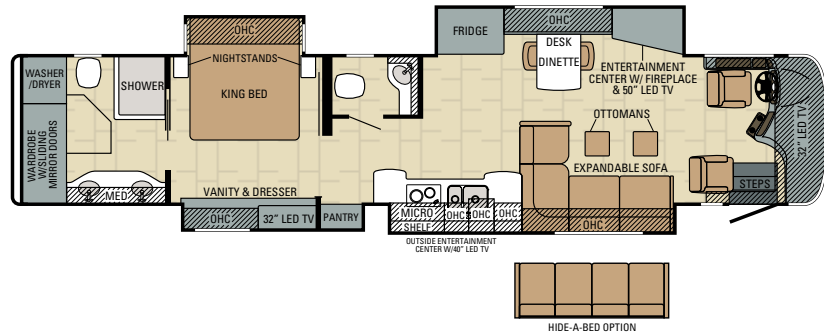


Cayenne

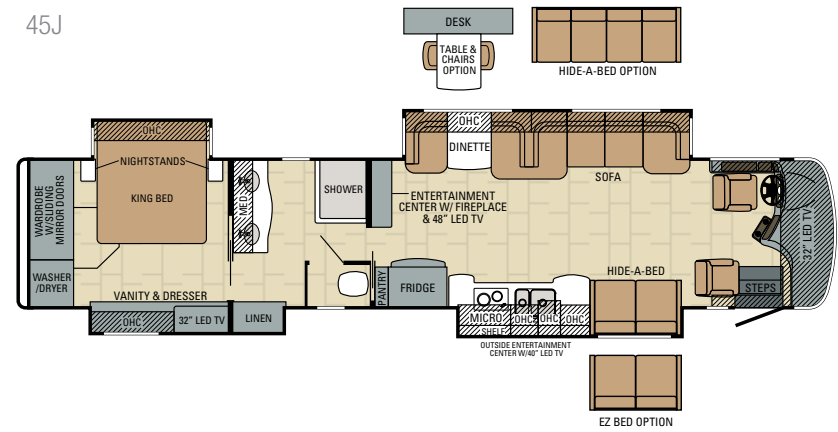


Emerald Green

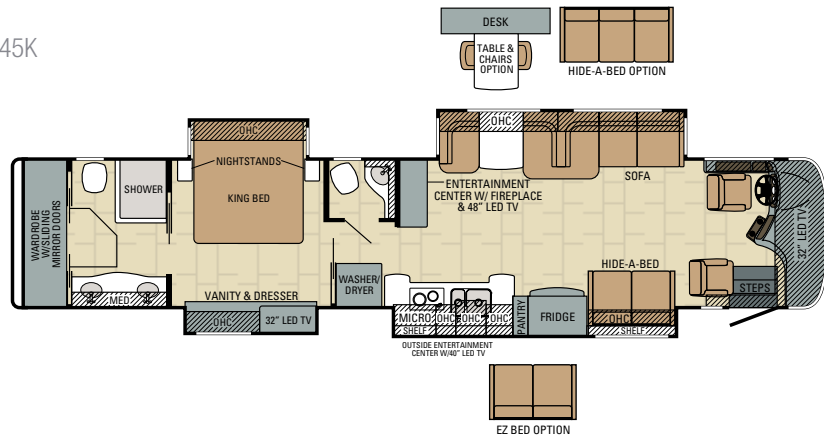
45B



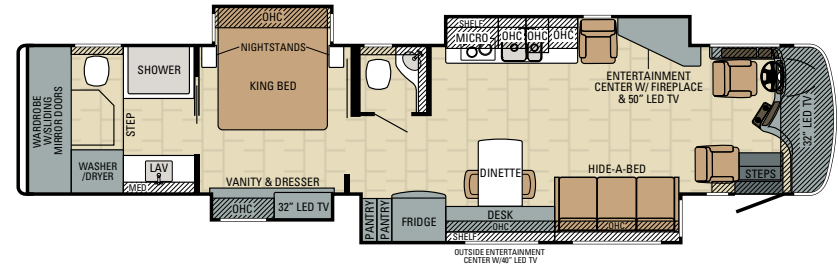
45J



45K

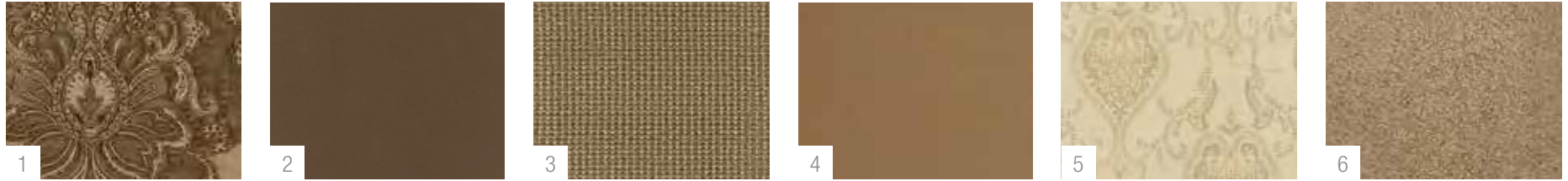


45A



Floorplan	GVWR (lbs.)	GCWR (lbs.)	Front GAWR (lbs.)	Rear GAWR (lbs.)	Tag GAWR (lbs.)	Wheel Base	Overall Length	Exterior Height w/ A/C & Satellite	Exterior Width	Interior Height	Fresh Water Capacity (gal.)	Grey Waste Water Capacity (gal.)	Black Waste Water Capacity (gal.)
45B	54,000	74,000	20,000	20,000	14,000	320"	44' 11"	155"	101"	84"	100	62	41
45J	54,000	74,000	20,000	20,000	14,000	320"	44' 11"	155"	101"	84"	100	62	41
45K	54,000	74,000	20,000	20,000	14,000	320"	44' 11"	155"	101"	84"	100	62	41
45A	54,000	74,000	20,000	20,000	14,000	320"	44' 11"	155"	101"	84"	100	62	41

STANDFORD



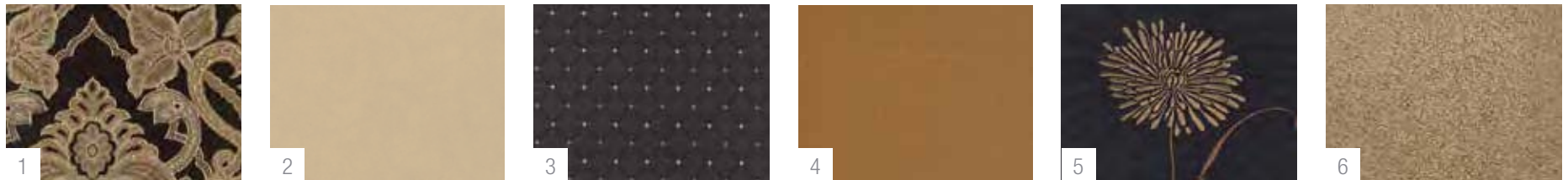
1. Main 2. Leather Seating 3. Coordinate 4. Bedspread 5. Bedroom Accent 6. Carpet

MOCHA



1. Main 2. Leather Seating 3. Coordinate 4. Bedspread 5. Bedroom Accent 6. Carpet

MIDNIGHT PEARL



1. Main 2. Leather Seating 3. Coordinate 4. Bedspread 5. Bedroom Accent 6. Carpet

WOOD



7. Main (a) Windsor Glazed Cherry | (b) Tuscan Glazed Cherry | (c) Natural Glazed Cherry **8. Wood (bath)** Caramel Glazed Maple

STANDARD CHASSIS EQUIPMENT

Spartan® K3 raised-rail chassis
Cummins® 15-liter ISX turbocharged 600 HP engine, 1,950 lb. ft. torque at 1,200 RPM
Allison® 4,000 MH 6-speed transmission
1,500-watt engine block heater
Reyco® Granning® IFS independent front air suspension
Ridewell tag axle suspension
Hadley® air leveling system
Reyco Granning front axle 20,000-pound wide track
20,000-pound Meritor® rear axle; 14,000-pound tag axle
4.30 “Quiet-Gear” rear axle ratio
20,000-pound hitch with 7/4-pin plug
Tag axle air dump
Side-mounted radiator
All-wheel ABS brakes
Three-stage engine brake
Automatic traction control
Bilstein® shocks: 60mm in front and 46mm on rear tag
150-gallon fuel tank (dual fill)
15-gallon DEF tank with easy-fill door
Michelin® 365/70R 22.5-inch tires (front) and 315/80R 22.5-inch tires (rear)
55-degree turning radius
Chassis batteries (2)
210-amp alternator
Remote air connection

STANDARD CONSTRUCTION FEATURES

X-Bridge™ frames welded into chassis frame
Enclosed, insulated and heated floor and thermostat-controlled heating in storage area
Insulation with reflective Flexfoil® floor (R-33), roof (R-24), sidewalls (R-16), front and rear caps (R-22)
2-inch x 4-inch floor truss construction
¾-inch, 7-ply plywood main floor decking
Aluma-Tru Superstructure construction on 12-inch - 16-inch centers
2 ½-inch exterior wall with welded tubular aluminum construction and high-gloss, Gelcoat fiberglass
Flush-mounted electric-powered slideout rooms with remote control
One-piece fiberglass roof with ¾-inch plywood decking and 4-inch arched aluminum roof truss
Steel-reinforced front cap and windshield frame

HEAT, A/C, POWER AND WATER EQUIPMENT

Aqua-Hot® 450 diesel hydronic water and heating system with in-floor heat throughout
15,000-BTU low-profile A/C units (3) with heat pump, digital thermostat and roof-to-ground condensation drain tubes
50-amp power cord with electric reel
Onan® 12,500-watt diesel generator with auto-gen start on powered slideout tray
2,800-watt and 2,000-watt pure sine wave inverter
6V glass mat batteries on sliding tray (8)
Surge protector transfer switch
Water hose with electric reel
Black holding tank sprayer
Macerator holding tank dump system with electric gate valves
SeeLevel™ tank monitoring system
City and tank water filtration system
Winterizing drain system

STANDARD EXTERIOR EQUIPMENT

3M® front protective film mask
LED high-beam headlights and Xenon® low-beam headlights
LED fog lights
Daytime running lights
LED marker and turn lights the full length of the coach
LED docking lights

LED accent lights on underside of slideout rooms curbside
Lighted grab handle with keypad system
Keyless entry with key fob
Electric-powered, double-step entrance
Aire-Secure™ travel locks for all pocket doors
Girard® power entrance door awning with LED lights
Girard Ultra window shade awning and Ultra slideout awnings
Roof-mounted Girard Vision dual-pitched patio awning with LED lights
Chrome, heated, remote control, side-view mirrors with integrated cameras
Frameless, tinted, dual-pane, safety-glass windows
Exterior 40-inch Samsung® LED HDTV on TV bracket with extend and swivel arm and JBL® multimedia stereo receiver with Bluetooth® audio streaming
Exterior utility center, heated and enclosed with system monitor panel
Powered slideout cargo trays (2)
Winegard® in-motion satellite dome with prep for Trav’ler® satellite dish
Winegard Rayzar®-powered TV antenna
Power rear engine door
Full-width rear mudflap

COCKPIT AMENITIES

Powered flush stepwell cover
MCD powered front sun visors and privacy shade
Ultra-Vision® one-piece, wraparound, tinted windshield
8-way power, lumbar, heated, leather driver and passenger seats with integrated 3-point lap and shoulder safety belts
VIP soft-touch, wood-grain, leather-wrapped, tilt and telescoping steering wheel with integrated controls for radio, cruise and wipers
Spartan Message Center with LCD display featuring: odometer, tachometer, fuel economy, fuel remaining, outside air temperature, coolant temperature, engine oil temperature and pressure, transmission temperature, turbo boost pressure, air pressure, trip meter, speed, and voltage
Infotainment center with touch screen, Rand-McNally™ GPS navigation, Bluetooth, SiriusXM™ radio and tuner
JBL premium audio sound system with speakers, amplifier and subwoofer
Hydraulic automatic leveling jack system
Battery boost system
Powered adjustable foot pedals
Color backup camera and monitor system with side- and rear-view cameras
TripTek™ Information Center

STANDARD INTERIOR EQUIPMENT

Multiplex controlled lighting system
LED recessed 12V lighting
High-gloss 12-inch x 24-inch porcelain tile with granite inlay design
Powered MCD solar day and blackout night shades
Samsung 50-inch 4K UHD TV (45B, 45A)
Samsung 48-inch 4K UHD TV (45J, 45K)
Samsung 32-inch LED HDTV in front overhead
Samsung 32-inch LED HDTV in bedroom
Bose® CineMate® 130 home theater system in living area
Bose Solo 15 sound bar in bedroom
Leather hide-a-bed(s)
Stackable washer and dryer
Central vacuum system
LED-lit electric fireplace

STANDARD KITCHEN EQUIPMENT

LED-lit quartz countertops with integrated stainless steel sink
Pullout cabinet extension with countertop
Cutting board
Silverware drawer
Large, deep drawer with waste basket
Dishwasher
Flush-mounted induction cooktop

Samsung 1.7-cubic-foot convection microwave oven
Samsung residential 23-cubic-foot refrigerator with ice maker and water dispenser

STANDARD BEDROOM EQUIPMENT

Tempur-Pedic® Cloud® Prima king-size mattress
Ceiling fan
Large cedar-lined wardrobe

STANDARD BATHROOM EQUIPMENT

LED-lit quartz countertops with integrated sink(s)
Porcelain toilet
Frameless glass shower door
Porcelain-tiled shower walls and floor with skylight
Power vent

STANDARD SAFETY EQUIPMENT

Security system with glass shatter sensors
Motion-sensor security lights (2)
Smoke alarm
Carbon monoxide alarm
Security safe

OPTIONS

Canadian Standards
Free-standing table with 4 chairs, hide-a-bed, sofa lounge curbside (45J and 45K)
L-sofa lounge and hide-a-bed (45B)
100-inch sofa with incliner and hide-a-bed (45B)
Desk with Televator® (45A)
Vegatouch iPad® Control Center
Winegard Trav’ler satellite dish - DIRECTV®
Winegard Trav’ler satellite dish - Shaw Direct
Solar panels (dual 100-watt) with Morningstar® SunSaver™ Duo solar panel charge controller
2.8-cubic-foot exterior freezer with slideout tray

A large motorhome is driving on a winding road through a mountainous landscape at sunset. The motorhome is white with blue and grey accents. The road is paved and has a metal guardrail on the left side. The landscape features steep, rocky mountains with patches of green and brown vegetation. In the distance, a body of water is visible between the mountains. The sky is filled with soft, golden light from the setting sun, with some clouds catching the light. The overall mood is serene and adventurous.

ANTHEM

ENJOY THE JOURNEY

From the lush master suite to its well-appointed cockpit, the Anthem is attention to detail at its finest.



FEATURES: Girard® Vision dual-pitched patio awning with LED lights | Power rear engine door

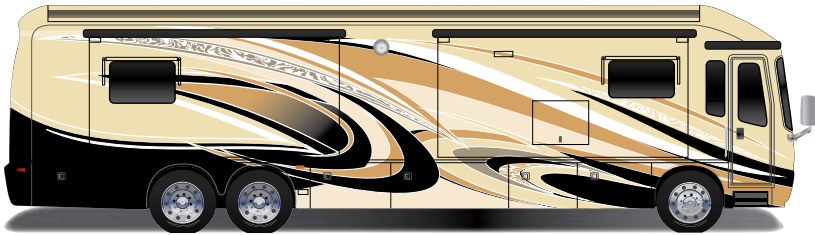


FEATURES: Spacious kitchen featuring solid-surface countertops with LED accent lights and flush-mounted induction cooktop | Dishwasher | Cockpit featuring Spartan® message center, infotainment center and JBL® premium audio sound system | Tempur-Pedic® Cloud® Prima king-size mattress

THE QUIETEST RIDING, BEST HANDLING COACH ON THE MARKET TODAY. PERIOD.



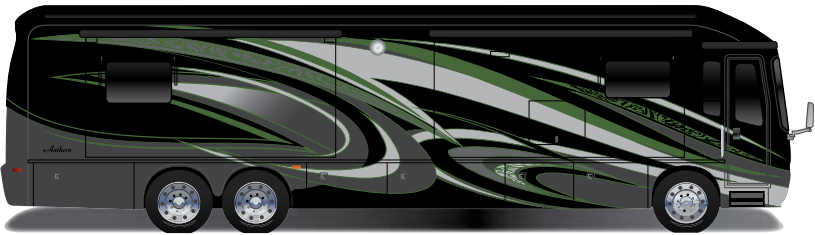
FEATURES: Spacious bedroom with ceiling fan | Bathroom featuring solid-surface countertops with LED accent lights and an integrated sink



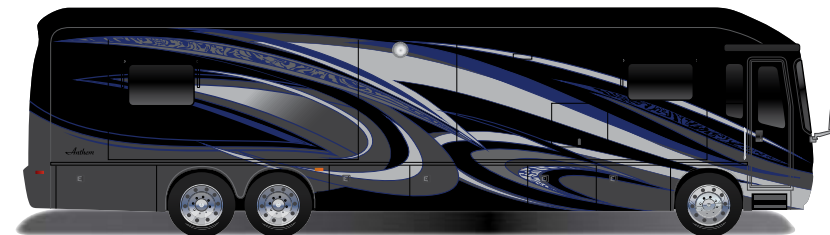
Beachstone



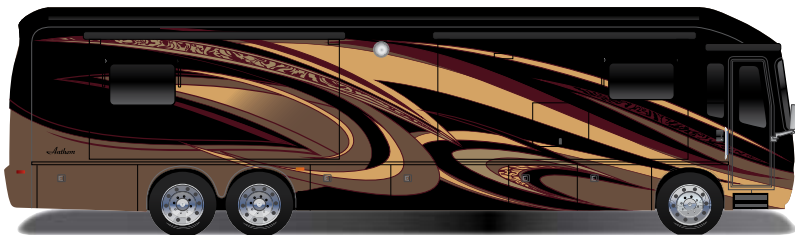
Firestorm



Mint Delight



Victory Blue

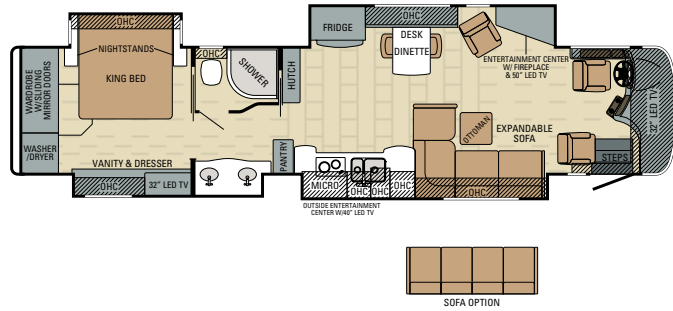


Gold Ribbon

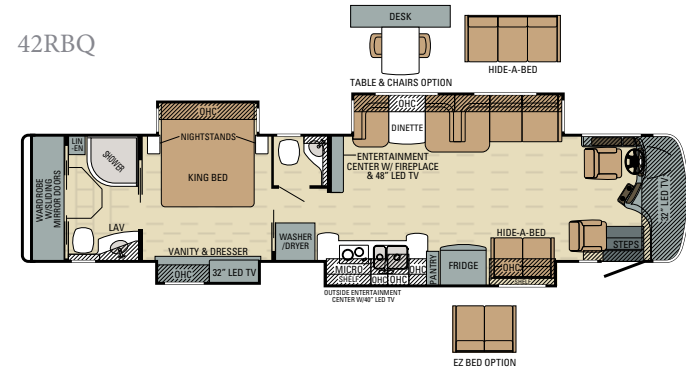


Rich Chocolate

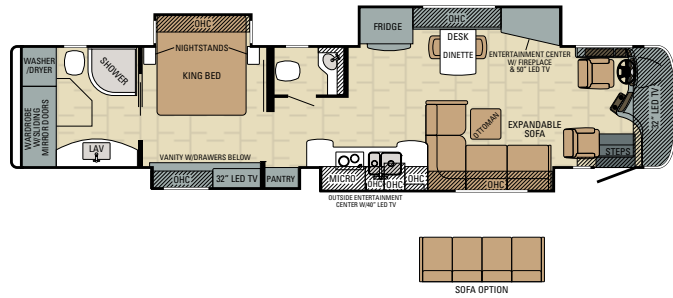
42DEQ



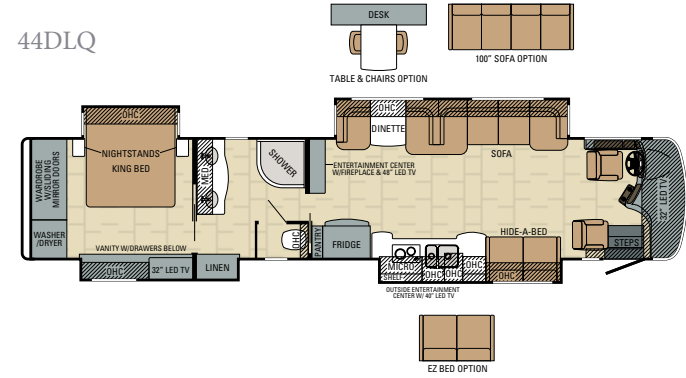
42RBQ



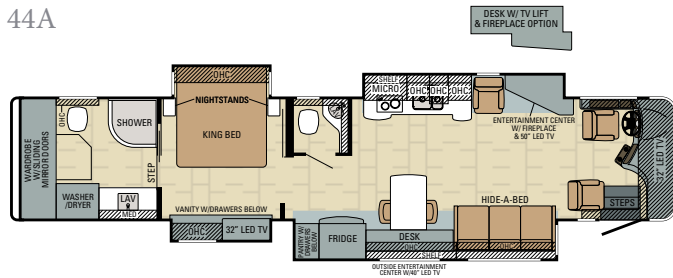
44B



44DLQ

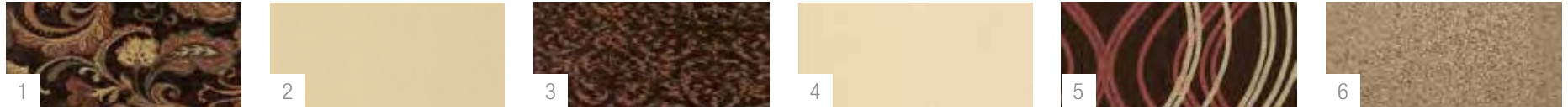


44A



Floorplan	GVWR (lbs.)	GCWR (lbs.)	Front GAWR (lbs.)	Rear GAWR (lbs.)	Tag GAWR (lbs.)	Wheel Base	Overall Length	Exterior Height w/ A/C & Satellite	Exterior Width	Interior Height	Fresh Water Capacity (gal.)	Grey Waste Water Capacity (gal.)	Black Waste Water Capacity (gal.)
42DEQ	49,000	64,000	17,000	20,000	12,000	296"	43' 1"	151"	101"	84"	100	62	41
42RBQ	49,000	64,000	17,000	20,000	12,000	296"	43' 1"	153"	101"	84"	100	62	41
44B	49,000	64,000	17,000	20,000	12,000	320"	44' 11"	150"	101"	84"	100	62	41
44DLQ	49,000	64,000	17,000	20,000	12,000	320"	44' 11"	153"	101"	84"	100	62	41
44A	49,000	64,000	17,000	20,000	12,000	320"	44' 11"	153"	101"	84"	100	62	41

AMBIENCE



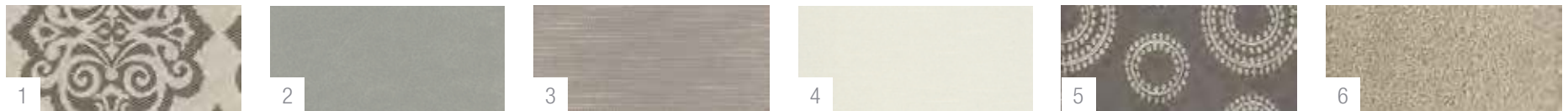
1. Main 2. Ultraleather Seating 3. Coordinate 4. Bedspread 5. Bedroom Accent 6. Carpet

MAJESTIC



1. Main 2. Ultraleather Seating 3. Coordinate 4. Bedspread 5. Bedroom Accent 6. Carpet

MELANCHOLY



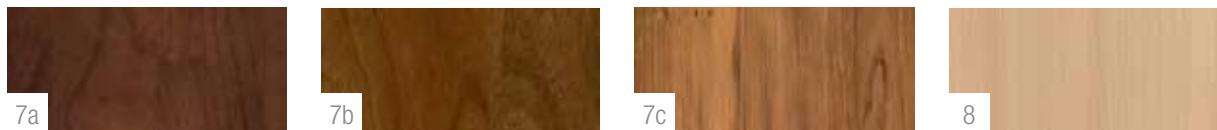
1. Main 2. Ultraleather Seating 3. Coordinate 4. Bedspread 5. Bedroom Accent 6. Carpet

BUTTERSCOTCH



1. Main 2. Ultraleather Seating 3. Coordinate 4. Bedspread 5. Bedroom Accent 6. Carpet

WOOD



7. Main (a) Windsor Glazed Cherry | (b) Tuscan Glazed Cherry | (c) Natural Glazed Cherry 8. Wood (bath) Caramel Glazed Maple (excludes 42RBQ)

STANDARD CHASSIS EQUIPMENT

Spartan® Mountain Master raised-rail chassis
Cummins® ISL turbocharged 450 HP engine, 1,250 lb. ft. torque at 1,400 RPM
Allison® 3,000 MH 6-speed transmission
1,000-watt engine block heater
Reyco® Granning® IFS independent front air suspension
Hendrickson® rear air suspension
Reyco Granning front axle 17,000-pound wide track
20,000-pound rear axle, 12,000-pound tag axle
4.88 "Quiet-Gear" rear axle ratio
15,000-pound hitch with 7/4-pin plug
Tag axle air dump
Side-mounted radiator
ABS brakes on front and drive axle/drum brakes on tag axle
Two-stage engine brake
Automatic traction control
Bilstein® shocks
150-gallon fuel tank (dual fill)
15-gallon DEF tank with easy-fill door
Michelin® 315/80R 22.5-inch tires (front) and 295/80R 22.5-inch tires (rear)
55-degree turning radius
Chassis batteries (2)
170-amp alternator
Remote air connection

STANDARD CONSTRUCTION FEATURES

X-Bridge™ frames welded into chassis frame
Enclosed, insulated and heated floor and thermostat-controlled heating in storage area
Insulation with reflective Flexfoil® floor (R-33), roof (R-24), sidewalls (R-16), front and rear caps (R-22)
2-inch x 4-inch floor truss construction
¾-inch, 7-ply plywood main floor decking
Aluma-Tru Superstructure construction on 12-inch - 16-inch centers
2 ½-inch exterior wall with welded tubular aluminum construction and high-gloss, Gelcoat fiberglass
Flush-mounted electric-powered slideout rooms with remote control
One-piece fiberglass roof with ¾-inch plywood decking and 4-inch arched aluminum roof truss
Steel-reinforced front cap and windshield frame

HEAT, A/C, POWER AND WATER EQUIPMENT

Aqua-Hot® 450 diesel hydronic water and heating system with in-floor heat throughout
15,000-BTU low-profile A/C units (3) with heat pump, digital thermostats and roof-to-ground condensation drain tubes
50-amp power cord with electric reel
Onan® 12,500-watt diesel generator with auto-gen start on powered slideout tray
2,800-watt and 2,000-watt pure sine wave inverter
6V glass mat batteries on sliding tray (8)
Surge protector transfer switch
Water hose with electric reel
Black holding tank sprayer
Macerator holding tank dump system with electric gate valves
SeeLevel™ tank monitoring system
City and tank water filtration system
Winterizing drain system

STANDARD EXTERIOR EQUIPMENT

3M® front protective film mask
LED high-beam headlights and Xenon® low-beam headlights
LED fog lights
Daytime running lights
LED marker and turn lights the full length of the coach
LED docking lights
LED accent lights on underside of slideout rooms curbside
Lighted grab handle with keypad system

Keyless entry with key fob
Aire-Secure™ travel locks for all pocket doors
Girard® power entrance door awning with LED lights
Girard Ultra window shade awning and Ultra slideout awnings
Roof-mounted Girard Vision dual-pitched patio awning with LED lights
Chrome, heated, remote control, side-view mirrors with integrated cameras
Frameless, tinted, dual-pane, safety-glass windows
Exterior 40-inch Samsung® LED HDTV on TV bracket with extend and swivel arm and JBL® multimedia stereo receiver with Bluetooth® audio streaming
Exterior utility center, heated and enclosed with system monitor panel
Manual slideout cargo tray
Winegard® in-motion, dome, roof-mounted satellite dish with prep for Trav'ler® satellite dish
Winegard Rayzar®-powered TV antenna
Power rear engine door
Full-width rear mudflap

COCKPIT AMENITIES

Powered flush stepwell cover
MCD powered front sun visors and privacy shade
Ultra-Vision® one-piece, wraparound, tinted windshield
8-way power, lumbar, ultraleather driver and passenger seats with integrated 3-point lap and shoulder safety belts
VIP soft-touch, wood-grain, leather-wrapped, tilt and telescoping steering wheel with integrated controls for radio, cruise and wipers
Spartan Message Center with LCD display featuring: odometer, tachometer, fuel economy, fuel remaining, outside air temperature, coolant temperature, engine oil temperature and pressure, transmission temperature, turbo boost pressure, air pressure, trip meter, speed, and voltage
Infotainment center with touch screen, Rand-McNally™ GPS navigation, Bluetooth, SiriusXM™ radio and tuner
JBL premium audio sound system with speakers, amplifier and subwoofer
Hydraulic automatic leveling jack system
Battery boost system
Powered adjustable foot pedals
Color backup camera and monitor system with side- and rear-view cameras

STANDARD INTERIOR EQUIPMENT

Multiplex controlled lighting system
LED recessed 12V lighting
High-gloss 12-inch x 24-inch porcelain tile floor
Powered MCD solar day and blackout night shades
Samsung 50-inch 4K UHD TV (42DEQ, 44B, 44A)
Samsung 48-inch 4K UHD TV (44DLQ, 42RBQ)
Samsung 32-inch LED HDTV in front overhead
Samsung 32-inch LED HDTV in bedroom
Bose® CineMate® 130 home theater system in living area
Bose Solo 15 sound bar in bedroom
Ultraleather hide-a-bed(s)
Stackable washer and dryer
Central vacuum system
LED-lit electric fireplace

STANDARD KITCHEN EQUIPMENT

LED-lit, solid-surface countertops with stainless steel sink
Pullout cabinet extension with countertop
Porcelain tile backsplash with glass design inlays
Cutting board
Silverware drawer
Large, deep drawer with waste basket
Dishwasher
Flush-mounted induction cooktop
Samsung 1.7-cubic-foot convection microwave oven
Samsung residential 23-cubic-foot refrigerator with ice maker and water dispenser

STANDARD BEDROOM EQUIPMENT

Tempur-Pedic® Cloud® Prima king-size mattress
Ceiling fan
Large cedar-lined wardrobe

STANDARD BATHROOM EQUIPMENT

LED-lit, solid-surface countertop(s) with integrated sink
Porcelain toilet
Porcelain-tiled shower with skylight
Power vent

STANDARD SAFETY EQUIPMENT

Security system with glass shatter sensors
Motion-sensor security lights (2)
Smoke alarm
Carbon monoxide alarm
Security safe

OPTIONS

Canadian Standards
Free-standing table with 4 chairs, hide-a-bed, sofa lounger curbside (n/a with standard curbside hide-a-bed sofa) (42RBQ, 44DLQ)
100-inch sofa with incliner and hide-a-bed (42DEQ, 44B)
Vegatouch iPad® control center
Winegard Trav'ler satellite dish - DIRECTV®
Winegard Trav'ler satellite dish - Shaw Direct
Solar panels (dual 100-watt) with Morningstar® SunSaver™ Duo solar panel charge controller
2.8-cubic-foot exterior freezer with slideout tray
Desk with Televator® lift (44A)



ASPIRE

ELEVATE YOUR EXPEDITION

Indulgence never felt so smart—thanks to the unmatched value of the all-new Aspire.



FEATURES: Cockpit featuring Spartan® message center, infotainment center and JBL® premium audio sound system | Solar day and blackout night shades

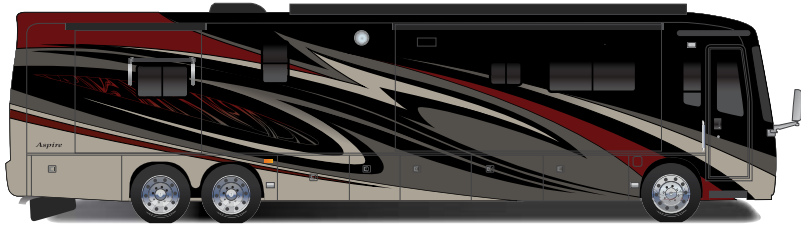


FEATURES: Bathroom featuring solid-surface countertops with LED accent lights and an integrated sink | Spacious bedroom with ceiling fan

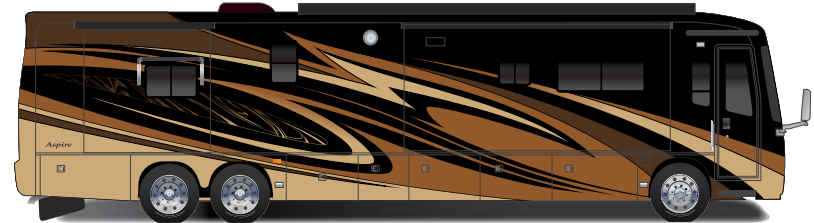
THE QUIETEST RIDING, BEST HANDLING COACH ON THE MARKET TODAY. PERIOD.



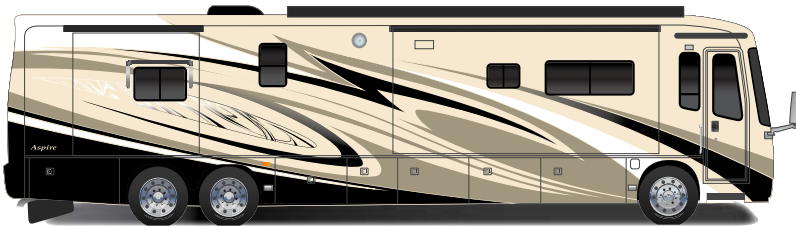
FEATURES: Spacious kitchen featuring solid-surface countertops with LED accent lights and flush-mounted induction cooktop | Silverware drawer | Chrome overhead slideout baskets | Pull-out counter extension and deep sliding drawers



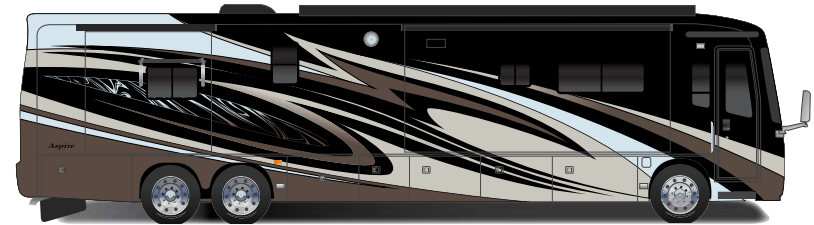
Sweet Victory



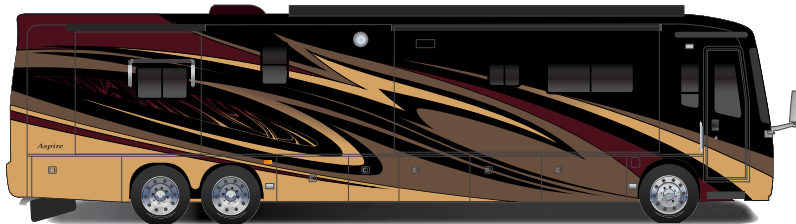
Anniversary Gold



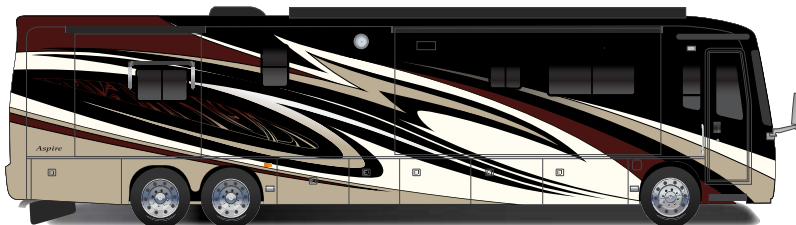
Bronze Metal



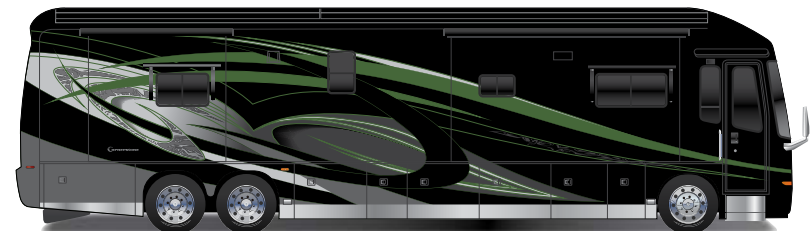
California Chrome



Golden Tan

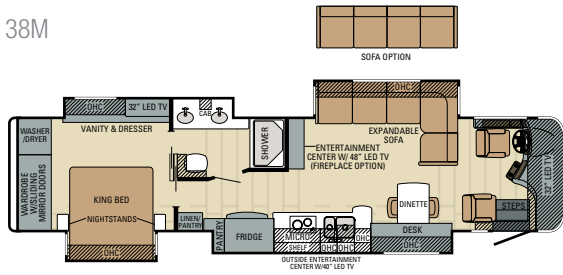


Windswept

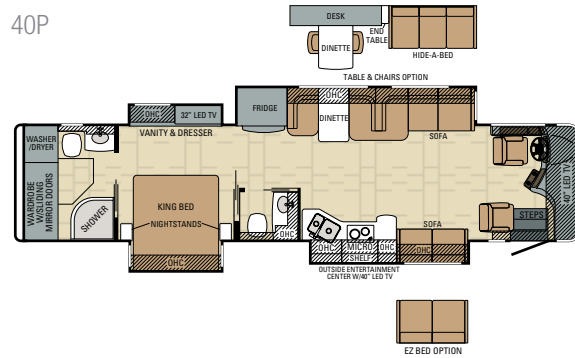


Spring Green

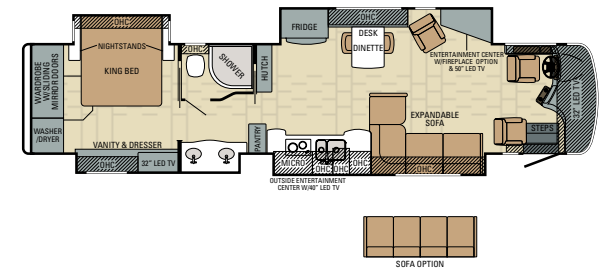
38M



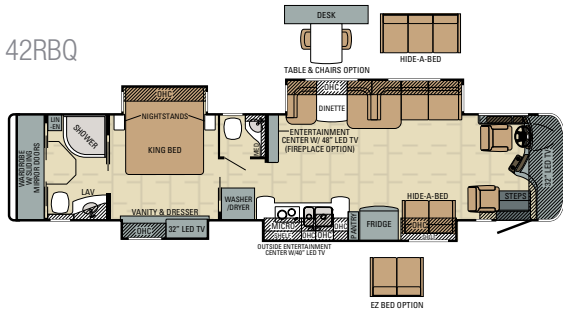
40P



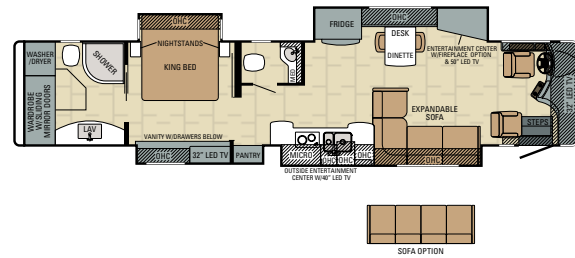
42DEQ



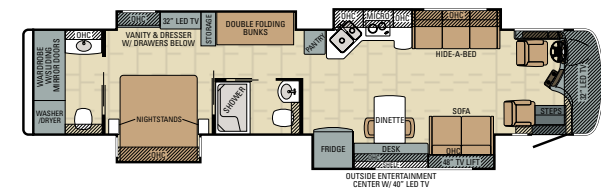
42RBQ



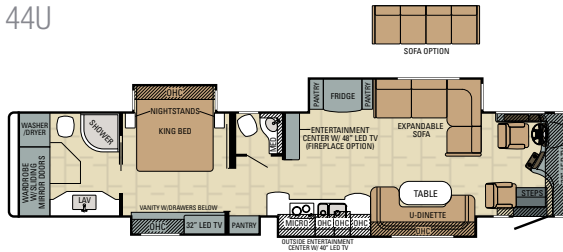
44B



44R

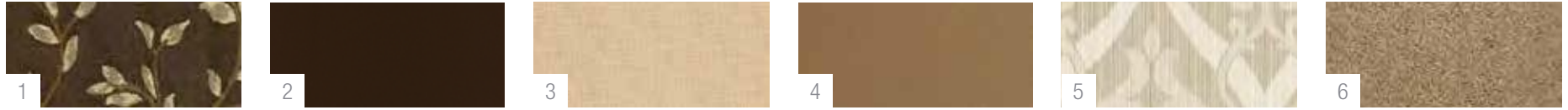


44U



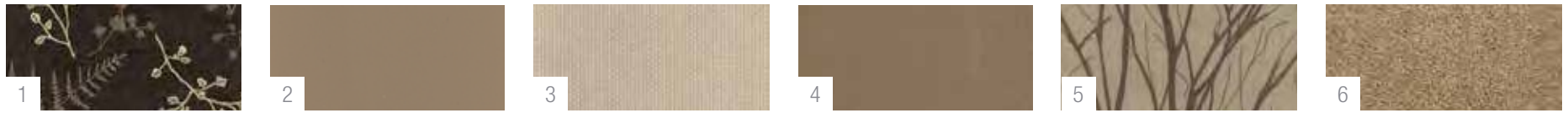
Floorplan	GVWR (lbs.)	GCWR (lbs.)	Front GAWR (lbs.)	Rear GAWR (lbs.)	Tag GAWR (lbs.)	Wheel Base	Overall Length	Exterior Height w/ A/C & Satellite	Exterior Width	Interior Height	Fresh Water Capacity (gal.)	Grey Waste Water Capacity (gal.)	Black Waste Water Capacity (gal.)
38M	38,600	53,600	14,600	24,000	N/A	261"	40' 6"	152"	101"	84"	100	62	41
40P	38,600	53,600	14,600	24,000	N/A	261"	40' 6"	152"	101"	84"	100	62	41
42DEQ	47,660	62,660	15,660	20,000	12,000	296"	43' 2"	152"	101"	84"	100	62	41
42RBQ	47,660	62,660	15,660	20,000	12,000	296"	43' 2"	152"	101"	84"	100	62	41
44B	47,660	62,660	15,600	20,000	12,000	320"	44' 11"	152"	101"	84"	100	62	41
44R	47,660	62,660	15,600	20,000	12,000	320"	44' 11"	152"	101"	84"	100	62	41
44U	47,660	62,660	15,660	20,000	12,000	320"	44' 11"	152"	101"	84"	100	62	41

BAHAMA WIND



1. Main 2. Ultraleather Seating 3. Coordinate 4. Bedspread 5. Bedroom Accent 6. Carpet

SILVER CLOUD



1. Main 2. Ultraleather Seating 3. Coordinate 4. Bedspread 5. Bedroom Accent 6. Carpet

ISLAND PEARL



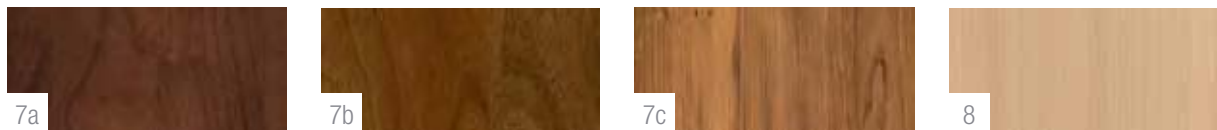
1. Main 2. Ultraleather Seating 3. Coordinate 4. Bedspread 5. Bedroom Accent 6. Carpet

BUTTERCUP



1. Main 2. Ultraleather Seating 3. Coordinate 4. Bedspread 5. Bedroom Accent 6. Carpet

WOOD



7. Main (a) Windsor Glazed Cherry | (b) Tuscan Glazed Cherry | (c) Natural Glazed Cherry 8. Wood (bath) Caramel Glazed Maple (excludes 38M, 40P, 44R)

STANDARD CHASSIS EQUIPMENT

Spartan® Mountain Master raised-rail chassis
Cummins® ISL turbocharged 450 HP engine, 1,250 lb. ft. torque at 1,400 RPM
Allison® 3,000 MH 6-speed transmission
1,000-watt engine block heater
Front axle I-beam 15,660-pound wide track
20,000-pound rear axle, 12,000-pound tag axle
4.88 “Quiet-Gear” rear axle ratio
15,000-pound hitch with 7/4-pin plug
Tag axle air dump
Side-mounted radiator
ABS brakes on front and drive axle/drum brakes on tag axle
Two-stage engine brake
Bilstein® shocks
100-gallon fuel tank (dual fill)
15-gallon DEF tank with easy-fill door
Goodyear® G670 295/80R 22.5-inch tires (front) and G670 275/80R 22.5-inch tires (rear)
Chassis batteries (2)
170-amp alternator
Remote air connection

STANDARD CONSTRUCTION FEATURES

X-Bridge™ frames welded into chassis frame
Enclosed, insulated and heated floor and thermostat-controlled heating in storage area
Insulation with reflective Flexfoil® floor (R-33), roof (R-24), sidewalls (R-16), front and rear caps (R-22)
2-inch x 4-inch floor truss construction
¾-inch, 7-ply plywood main floor decking
Aluma-Tru Superstructure construction on 12-inch - 16-inch centers
2 ½-inch exterior wall with welded tubular aluminum construction and high-gloss, Gelcoat fiberglass
Flush-mounted electric-powered slideout rooms with remote control
One-piece fiberglass roof with ¾-inch plywood decking and 4-inch arched aluminum roof truss
Steel-reinforced front cap and windshield frame

HEAT, A/C, POWER AND WATER EQUIPMENT

50-gallon propane gas tank
Aqua-Hot® 400-LP hydronic water and heating system with in-floor heat throughout
15,000-BTU low-profile A/C units with heat pump, digital thermostat and roof-to-ground condensation drain tubes
50-amp power cord with electric reel
Onan® 10,000-watt diesel generator with auto-gen start on slideout tray
2,800-watt pure sine wave inverter
6V batteries on sliding tray (4)
Solar power prep
Water hose with electric reel
Black holding tank sprayer
Macerator holding tank dump system with manual gate valves
SeeLevel™ tank monitoring system
City and tank water filtration system
Winterizing drain system

STANDARD EXTERIOR EQUIPMENT

3M® front protective film mask
LED high-beam headlights and Xenon® low-beam headlights
LED fog lights
Daytime running lights
LED marker and turn lights the full length of the coach
LED docking lights
LED accent lights on underside of slideout rooms curbside
Lighted grab handle with keypad system
Keyless entry with key fob
Aire-Secure™ travel locks for all pocket doors
Girard® power patio awning with LED lights
Girard power entrance door awning with LED lights

Girard Ultra window shade awning and Ultra slideout awnings
Chrome, heated, remote control, side-view mirrors with integrated cameras
Frameless, dual-pane, tinted, safety-glass windows
Exterior 40-inch Samsung® LED HDTV on TV bracket with extend and swivel arm and JBL® multimedia stereo receiver with Bluetooth® audio streaming
Exterior utility center, heated and enclosed with system monitor panel
Winegard® in-motion satellite dome with prep for Trav'ler® satellite dish
TV antenna
Power rear engine door
Full-width rear mudflap

COCKPIT AMENITIES

Powered flush stepwell cover
MCD powered front sun visors and privacy shade
Ultra-Vision® one-piece, wraparound, tinted windshield
Ultraleather, power adjustable driver and passenger seats with integrated 3-point lap and shoulder safety belts
Tilt and telescoping steering wheel with integrated controls
Spartan Message Center with LCD display featuring: odometer, tachometer, fuel economy, fuel remaining, outside air temperature, coolant temperature, engine oil temperature and pressure, transmission temperature, turbo boost pressure, air pressure, trip meter, speed, and voltage
Infotainment center with touch screen, Rand-McNally™ GPS navigation, Bluetooth, SiriusXM™ radio and tuner
JBL premium audio sound system with speakers, amplifier and subwoofer
Hydraulic automatic leveling jack system
Battery boost system
Powered adjustable foot pedals
Color backup camera and monitor system with side- and rear-view cameras

STANDARD INTERIOR EQUIPMENT

Multiplex controlled lighting system
LED recessed 12V lighting
12-inch x 24-inch porcelain tile floor
Manual MCD solar day and blackout night shades
Samsung 50-inch LED HDTV (44B, 42DEQ)
Samsung 48-inch LED HDTV (42RBQ, 44R, 44U)
Samsung 40-inch LED HDTV in front overhead (40P)
Samsung 32-inch LED HD TV in front overhead
Samsung 32-inch LED HDTV in bedroom
Samsung sound bars (2)
Ultraleather hide-a-bed sofa(s)
Stackable washer and dryer
Central vacuum system

STANDARD KITCHEN EQUIPMENT

LED-lit, solid-surface countertops with stainless steel sink
Pullout cabinet extension with countertop
Silverware drawer
Large, deep drawer with waste basket
Flush-mounted induction cooktop
Samsung 1.7-cubic-foot convection microwave oven
Samsung residential 23-cubic-foot refrigerator with ice maker and water dispenser

STANDARD BEDROOM EQUIPMENT

King-sized Denver Mattress®
Ceiling fan

STANDARD BATHROOM EQUIPMENT

LED-lit, solid-surface countertop(s) with integrated sink
Porcelain toilet
One-piece fiberglass shower with skylight
Power vent

STANDARD SAFETY EQUIPMENT

Security system with glass shatter sensors
Motion-sensor security lights (2)
Smoke alarm
Carbon monoxide detector
Propane alarm
Security safe

OPTIONS

Canadian Standards
LED-lit electric fireplace (n/a 40P, 44R)
Dishwasher
Free-standing table with 4 chairs, hide-a-bed, sofa lounge curbside (n/a with standard curbside hide-a-bed sofa) (40P, 42RBQ)
100-inch sofa with incliner and hide-a-bed (42DEQ, 44B, 44U)
122-inch sofa with incliner and hide-a-bed (38M)
Winegard Trav'ler satellite dish - DIRECTV®
Winegard Trav'ler satellite dish - Shaw Direct
Slideout storage tray

THE ENTEGRA COACH DIFFERENCE: SUPERIOR ENGINEERING, UNMATCHED CONSTRUCTION



1. SPARTAN® CHASSIS (see page 3)
2. EXCLUSIVE X-BRIDGE™ FRAME (see page 3)
3. ENHANCED VISIBILITY, thanks to a shallower dashboard design
4. SUPERIOR MANEUVERABILITY, by positioning the cab over the tires
5. One-piece, wraparound, *ULTRA-VISION®* WINDSHIELD, featuring a reinforced cap and frame for optimal strength where you need it most
6. WOOD FLOOR CONSTRUCTION (see page 3)
7. TILE AROUND CABINETRY (see page 3)
8. RESIDENTIAL-STYLE WALLS AND ROOF (see page 3)
9. VINYL PADDED CEILINGS help absorb sound
10. SUR-SEAL ENTRY DOOR LOCK features a complete-seal mechanism to prevent whistling

ENTEGRA COACH COVERAGE

Our family is proud to stand behind every luxury coach we build. That's why we offer bumper-to-bumper coverage for the first two years, or the first 24,000 miles of use (whichever comes first), plus five years of structural integrity coverage. You'll also enjoy our roadside assistance program—courtesy of Coach-Net™, the country's largest RV emergency road service—free for the first three years of ownership.



THE BONTRAGER FAMILY PROMISE

Lloyd Bontrager taught our family the power of the Golden Rule. For him, it meant that you always treat others the way you want to be treated. And it was a rule—not a suggestion. He not only ran his business this way; it's how he lived his life. And it's how we try to live ours—by being honest, reliable, accessible, responsive and thorough in everything we do.

THE
Bontrager
FAMILY PROMISE

WHY ENTEGRA COACH?

What drives you? For us, it's—well, the drive itself. The pursuit of a superior luxury coach. Unmatched engineering innovation. Rock-solid construction. And a ride that's as smooth and quiet as it is invigorating and well-appointed.

We build our luxury coaches one at a time—with unrelenting attention to detail and old-world craftsmanship. Then we back them with personalized customer service and coverage that is unmatched in the industry. So from the moment you drive off the lot, you're not only an owner—you're a member of the family.



ENTEGRACOACH®



The background of the entire page is a photograph of three Entegra Coach motorhomes parked on a dirt road in a mountainous landscape. The motorhomes are dark-colored with silver and grey graphics. The landscape features rugged, rocky mountains with patches of snow under a blue sky with white clouds. A central red box with a white border contains text.

THE NEW LOOK OF LUXURY

The all-new 2016 Entegra Coach is the ultimate in luxurious custom design. With our new, exclusive front and rear caps, backlit Entegra crest, and bold, modern lines, the 2016 Entegra Coach diesel motorhomes combine a commanding presence with delicate attention to detail.



ENTEGRA
COACH®

ENTEGRA COACH, INC., P.O. BOX 460, MIDDLEBURY, IN 46540

WWW.ENTEGRACOACH.COM

See dealer for further information and pricing. All information in this brochure is the latest available at the time of publication. Entegra Coach reserves the right to make changes and to discontinue models without notice or obligation. Photos in this brochure may show optional equipment and props for photography purposes only. Video screens and monitors are simulated. RVs built for sale in Canada may differ to conform to Canadian Codes. ©2015 Entegra Coach, Inc. 30K Printed in U.S.A. 9/15.

Gross Vehicle Weight Rating (GVWR): The maximum permissible weight of the motor coach, including the Unloaded Vehicle Weight (UVW) plus passengers, personal items, all cargo, fluids, options, and dealer-installed accessories. The GVWR is equal to or greater than the sum of the UVW and the Cargo Carrying Capacity. Gross Axle Weight Rating (GAWR): The maximum allowable weight each axle assembly is designed to carry, as measured at the tires, therefore including the weight of the axle assembly itself. Gross Combined Weight Rating (GCWR): The maximum allowable combined weight of the motor coach used as a tow vehicle and the attached towed vehicle.

