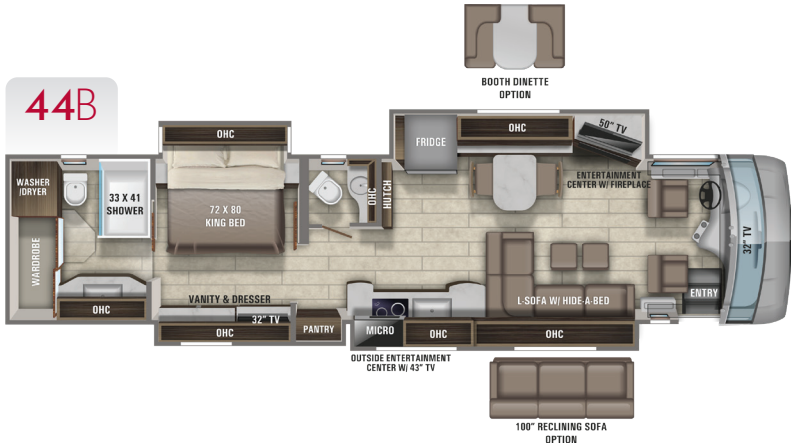


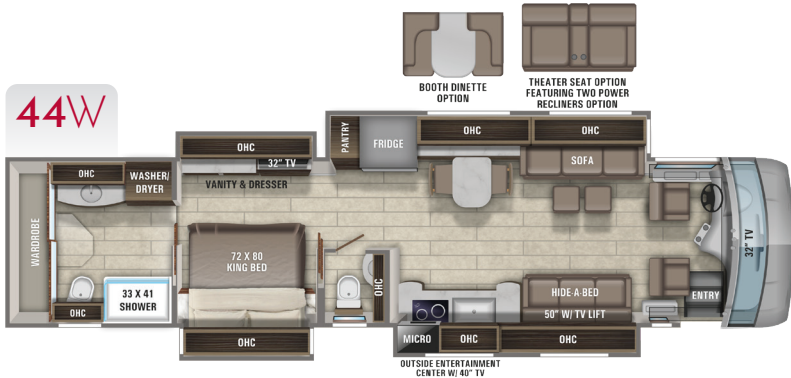
44B



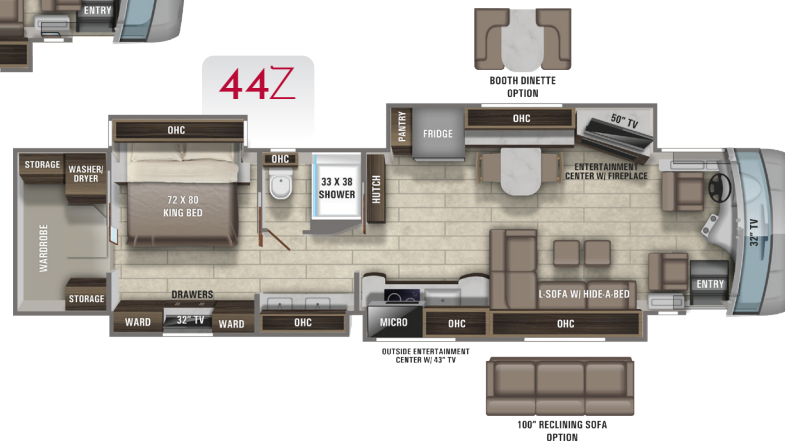
44F



44W



44Z



PAINT SELECTIONS



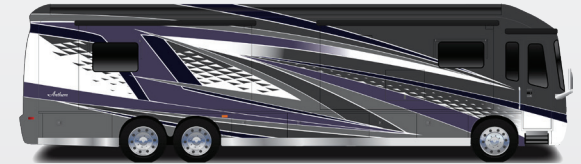
Aqua Blue



Cobalt Blue



Golden Harvest



Purple Rain



Rally Red



Steel Grey

## CHASSIS

Spartan® K2 raised-rail chassis  
 Cummins® L9 turbocharged 450 HP engine with 1,250-lb. ft. torque at 1,400 RPM  
 Allison® 3,000 MH 6-speed transmission  
 Side-mounted, parallel-airflow radiator  
 170-amp alternator  
 1,000-watt engine block heater  
 Two-stage engine brake  
 Reyco® Granning® front axle with independent front suspension - 20,000 lb. rating  
 Meritor rear axle - 20,000 lb. rating  
 Tag axle with air dump - 12,000 lb. rating  
 ABS disc brakes on front axle, drum brakes on drive and tag axle  
 4.88 rear axle ratio  
 Michelin® XZA 365/70R 22.5" tires (front) and XZA 315/80R 22.5" tires (rear)  
 Bilstein® shocks- 60mm front axle & 46mm rear/tag axles  
 Tire pressure monitoring system (TPMS) with temperature monitoring  
 Automatic traction control  
 Equalizer™ hydraulic automatic coach leveling  
 Valid Truline air leveling system with auxiliary air compressor  
 Remote air connection  
 (2) 12V chassis batteries  
 150-gal. fuel tank with dual fills  
 15-gal. DEF tank with dual fills (single fill on 44R)  
 Spartan® Safehaul tow vehicle air brake system  
 15,000-lb. hitch with 7-pin plug

## CONSTRUCTION

Roof: 4" arched aluminum trusses filled with batt insulation and reflective Flexfoil® topped with 3/8" plywood decking then one-piece fiberglass  
 Sidewalls: 2-1/2" exterior walls with Aluma-Tru™ welded tubular aluminum studs on 16" centers or less, filled with batt and Flexfoil® insulation, then covered with high-gloss gelcoat fiberglass (R-16)  
 Floors: 2" x 4" wood trusses on 16" centers or less filled with batt and Flexfoil® insulation then topped with 3/4" 7-ply plywood decking (R-33)  
 X-Bridge™ bracing welded into chassis frame  
 Aqua-Hot® heated basement storage  
 Insulated front and rear caps (R-24)  
 Steel-reinforced front cap and windshield frame  
 Entegra-exclusive Relia-Torque flush-mounted 12V slideout system

## HEAT, A/C, WATER, AND POWER

Onan® 12,500-watt diesel generator, with automatic start, on powered slide-out tray  
 3,000-watt pure sine wave inverter  
 (4) L16 AGM batteries (6V/390 amp hrs. ea.)

50-amp power cord on electric powered reel  
 Smart automatic transfer switch with surge protection  
 (3) 15,000-BTU A/C units with heat pumps and condensation drain system  
 Aqua-Hot® 450D hydronic water and heating system with in-floor heat throughout and engine preheat  
 LED-lit fireplace with 5,000-BTU heating element (44B, 44Z)  
 Sani-Con® Macerator holding tank dump system with manual gate valves, manual backup and metal door  
 Black holding tank sprayer  
 City and tank water filtration system  
 Winterizing drain system  
 Trutank™ ultrasonic tank monitoring system displayed on VegaTouch screen  
 Water hose with electric reel

## EXTERIOR

Premier Bus Armor 8" stainless-steel trim  
 Power rear engine door with manual override  
 Dual roof-mounted Girard® Vision dual-pitched patio awnings with LED lights  
 Girard® power entrance door awning with LED lights  
 Girard® Ultra slideout awnings  
 Girard® Ultra power window awnings  
 Frameless, dual-pane, tinted, safety-glass windows  
 Lit grab handle with doorbell and keypad system for keyless entry  
 43" Samsung® QLED 4K UHD Smart TV with tilt, swivel, and extend adjustment  
 JBL radio and speakers with USB port and receptacle  
 Chrome, heated, remote-control, side-view mirrors with integrated cameras and blind-spot indicators  
 Diamond Shield™ front protective film mask  
 LED high and low beam headlights and fog lights  
 Daytime running lights  
 LED marker lights, turn lights, license plate light, third brake light, accent lights and docking lights  
 LED accent lights under passenger slideout rooms  
 LED-lit chrome clearance accent light  
 Porch light and motion sensor security lights  
 Mudflap with chrome "Anthem" nameplate  
 Winegard® TRAV'LER satellite dish DIRECTV® - standard with USA option  
 Winegard® TRAV'LER satellite dish Shaw TV - standard with CSA option  
 Winegard® Rayzar Automatic powered TV antenna  
 Winegard® WiFi extender with 4G/LTE  
 Heated exterior utility center with 5" LED Firefly® tank monitoring panel  
 Power slideout basement storage tray  
 2.8-cu. ft. exterior Dometic® refrigerator/freezer on slideout tray  
 Push-button power-unlatching baggage doors with LED indicator light  
 Sikkens custom full-body paint

## COCKPIT

Valid 15" digital dash with quad core graphics processor, on-board diagnostics, selector knob and ability to display traditional instrument cluster, 360° camera system or GPS navigation  
 Blind spot monitoring system displayed on digital dash screen  
 Xite™ 360° HD digital camera system  
 Xite™ XSG4 infotainment system with dual 9" touchscreens, iGO navigation, Bluetooth®, Sirius XM™ and AM/FM tuner, integrated camera control, house mode whole-coach audio distribution and integrated VegaTouch coach control  
 E-Z Steer™ adjustable power steering assist  
 Steering wheel with integrated controls for cruise, wipers, radio and Bluetooth® phone functionality  
 Power tilt and telescoping steering column  
 JBL® premium audio 11-speaker sound system with amplifier, speakers and DVC subwoofer  
 Ultra-Vision® one-piece wrap-around tinted windshield  
 32" Samsung® QLED 4K UHD Smart TV in front overhead  
 Villa® heated leather driver and passenger seats with powered 6-way adjustment, lumbar, recline and footrest functions  
 Powered flush stepwell cover  
 Powered adjustable brake and accelerator pedals  
 Powered front sun visors and privacy shades  
 (2) dual USB ports and (2) 12V sockets for charging

## INTERIOR

Firefly multiplex system with 10" VegaTouch touchscreen for complete integration of coach controls, with remote monitoring and control (mobile app available)  
 50" Samsung® QLED 4K UHD Smart TV  
 Bose® sound bar with subwoofer and universal remote control  
 Sony® Blu-ray™ player  
 Premium leather Villa® furniture  
 Hand-laid porcelain tiled floors  
 LED interior lighting  
 Decorative ceiling feature with integrated accent lighting  
 Powered solar day and blackout night shades  
 Central vacuum system  
 Aire-Secure™ travel locks for all pocket doors  
 Removable screen on entry door  
 Bar area with beverage chiller and rain glass upper cabinet door with LED accent lighting (44R only)

## KITCHEN

Window with slider and screen  
 Whirlpool® stainless-steel residential refrigerator with ice maker and water dispenser  
 Induction cooktop with matching wood cover  
 Whirlpool® 1.9-cu. ft. convection microwave oven  
 Fisher & Paykel dishwasher  
 Porcelain tile backsplash  
 Solid-surface countertops with Blanco single-bowl granite sink and dimmable LED accent lighting

Maxxair® power vent exhaust fan with intake and touch screen control  
 Large, deep drawer for waste basket with easy access trash chute (trash chute not available in 44F, 44R)  
 Slide-out storage tray(s) in overhead cabinet

## BEDROOM

Select Comfort® Sleep Number® King-size mattress  
 32" Samsung® QLED 4K UHD Smart TV  
 Bose® sound bar with universal remote control  
 Sony® Blu-ray™ player  
 Ceiling fan  
 Nightstands with solid-surface tops  
 Large cedar-lined wardrobe

## BATHROOM

Solid-surface countertops with integrated glass sink and dimmable LED accent lighting  
 Porcelain tile shower with skylight and clear glass shower door  
 Teakwood shower seat (N/A 44F)  
 Fixed shower head and separate hand-held spray wand  
 Aqua View SHOWERMISER™ water saving system  
 Thetford® macerator toilet in main bath (N/A 44Z)  
 Thetford® Aria china toilet in mid bath (44B)  
 Maxxair® Deluxe power exhaust vent fan with intake  
 Whirlpool® stacked washer and dryer

## SAFETY

Carbon monoxide detector  
 Security system with glass shatter sensors  
 Smoke alarm  
 Storage safe

## OPTIONS

Canadian standards (CSA)  
 Theater seating with power recliners and fixed center console  
 Fireplace/TV/entertainment center and work station IPO sofa (44F, 44W only)  
 Winegard® in-motion satellite dome  
 Winegard® TRAV'LER satellite dish Dish Network®  
 Solar panels (dual 100 watt) with Morningstar® SunSaver Duo™ solar panel charge controller



Floorplan	GVWR (lbs.)	GCWR (lbs.)	Front GAWR (lbs.)	Rear GAWR (lbs.)	Tag GAWR (lbs.)	Wheel Base	Overall Length	Exterior Height w/ A/C & Satellite	Exterior Width	Interior Height	Fresh Water Capacity (gal.)	Grey Waste Water Capacity (gal.)	Black Waste Water Capacity (gal.)
44A, 44B, 44F, 44W	52,000	67,000	20,000	20,000	12,000	320"	44' 11"	12' 11"	101"	84"	100	62	41

It is important for your safety and enjoyment that you are aware of the weights and tow ratings of the RV you select. Consult a competent advisor for questions or advice. Whether you are new to RVing or a veteran, get a feel for the performance of your RV before heading out on the roadways. When you tow a vehicle with your RV, you must drive differently than when you drive a single vehicle. Practice hooking up, driving, backing up and braking in a safe environment or seek out professional instruction. Jayco affixes a weight label to each RV which lists weight information for that vehicle. Refer to that label to verify the vehicle will meet your requirements. Gross Vehicle Weight Rating (GVWR): The maximum permissible weight of the motorhome, including the Unloaded Vehicle Weight (UVW) plus passengers, personal items, all cargo, fluids, options and dealer-installed accessories. The GVWR is equal to or greater than the sum of the UVW and the Cargo Carrying Capacity. Gross Combined Weight Rating (GCWR): The maximum allowable combined weight of the motorhome used as a tow vehicle and the attached towed vehicle.

